

# THE HOFFMAN



4 BEDROOMS • 2.5 BATHROOMS • 2,045 SQUARE FEET\*

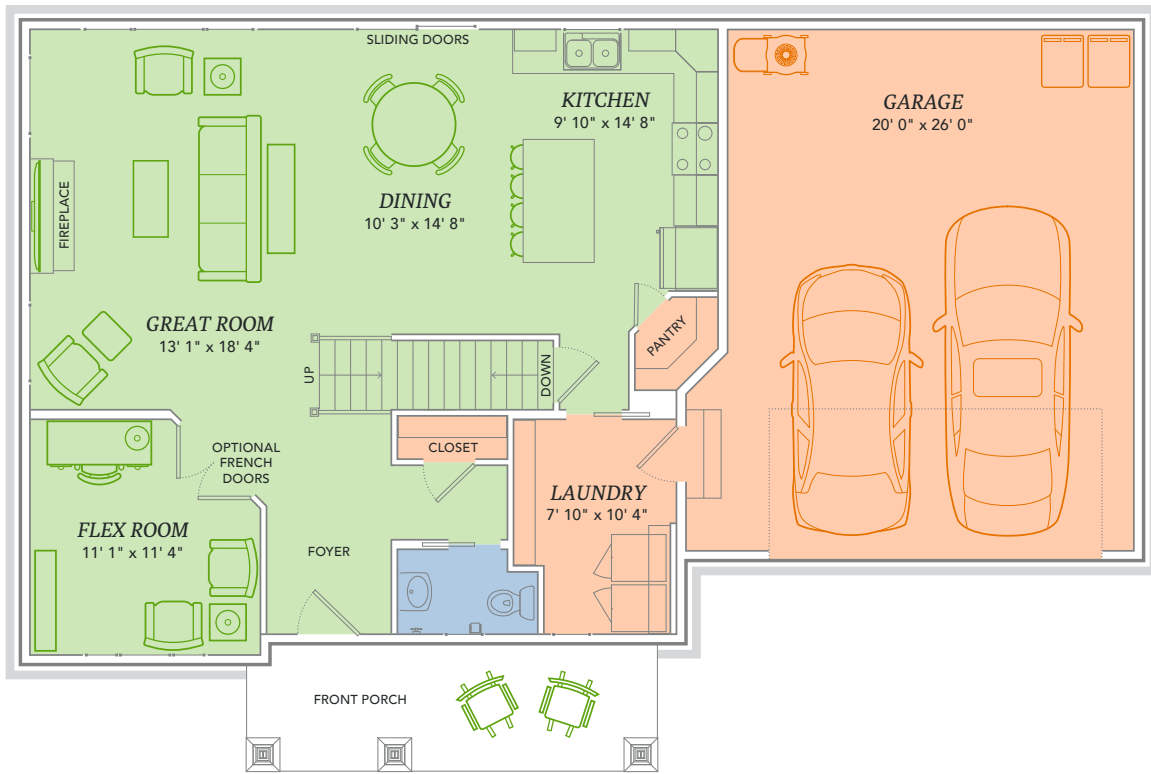


\*Varies by elevation

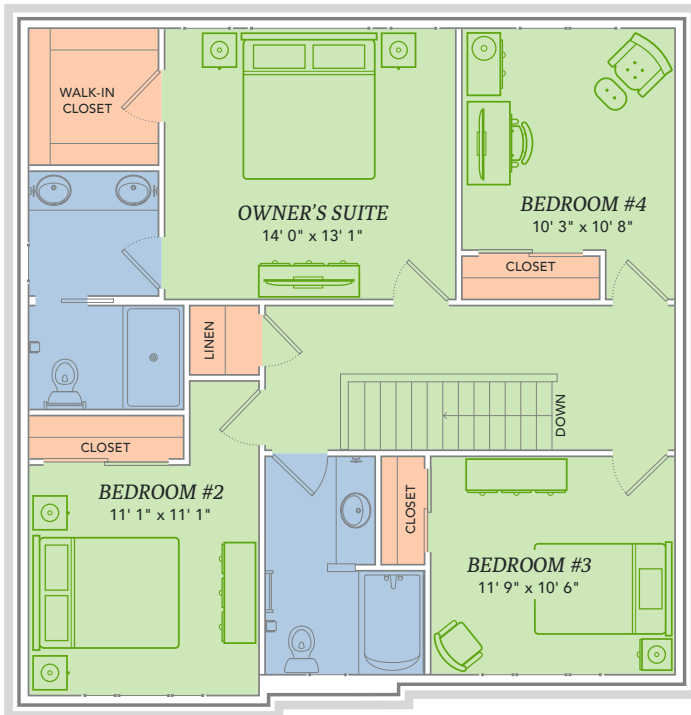
**WE MAKE BUILDING EASY.®** When you build a Veridian home, you get much more than a home designed around you and your dreams. You get the peace of mind that comes with nationally-recognized, award-winning, quality craftsmanship and energy efficiency. You get a home that's constructed using innovative building materials as well as the newest technology and building practices. The result is a high-performing, green and energy efficient home that's a healthier home for you and your pocketbook. And when you build with Veridian Homes, you build with a team of specifically trained experts who make homebuilding easy.

*Dream. Build. Live.*

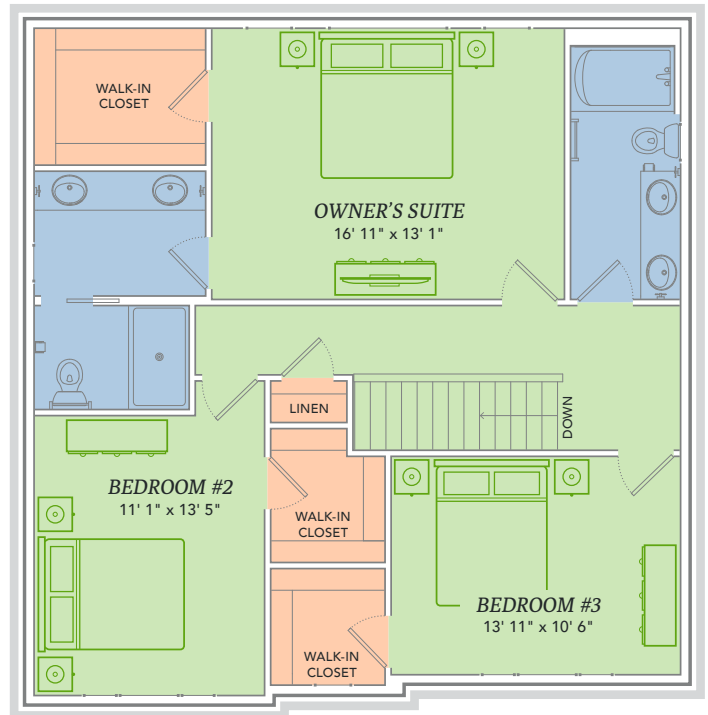
N60W21555 Legacy Trail, Menomonee Falls, WI 53051 | 262.252.3303 | [VeridianHomes.com](http://VeridianHomes.com)



*Second Floor with 4 Bedrooms*



*Second Floor with 3 Bedrooms*



**CALLING ALL COOKS**, booklovers and decorators! Go ahead, line the shelves with those classic Mark Twain novels or one-of-a-kind treasures. Load up that roomy kitchen with gourmet pans and obscure gadgets. With more space, means more luxury. Meet The Hoffman.

## Features

- Open floor plan
- Kitchen island with breakfast bar
- Flex room for formal dining, office, etc.
- Spacious first floor laundry/mudroom
- Fireplace in great room
- Owner's suite bathroom features dual vanities and water closet
- Large walk-in closet off owner's bathroom
- Extra storage room in garage
- Custom Auburn Ridge® cabinetry
- Smart Home+ technology
- Energy expert certified
- Award-winning high-performance home

## Options

- Nine foot and tray ceiling options
- Finished lower level
- Bump-out in dining area
- Personalized closet systems
- Tile shower or soaking tub in bathroom off of owner's suite
- Custom built-ins
- Additional green materials/products
- Personalize your home with thousands of options found within our Design Studio

## Elevations



CRAFTSMAN



CRAFTSMAN II



FARMHOUSE



PRAIRIE



TRADITIONAL



**CERTIFIED HIGH-PERFORMING HOMES**  
BUILDING ENERGY EFFICIENT, GREEN HOMES SINCE 2001



- Energy Expert Certified
- Insulated Entry Door
- Pella® Low-E Insulated Windows
- Insulated Garage Door
- Electronic Set-Back Thermostats
- Energy Efficient LED Lighting
- Kohler® Low Flow Fixtures
- Energy Star® Bath Fans
- Energy Efficient Air Conditioner, Furnace and Water Heater
- Radon Mitigation System
- 2x6 Framed Walls, 24 on Center
- Tyvek® House Wrap
- Advanced Air Sealing
- Spray Foam Insulation
- Weather Max® Adhesive Membrane



**\$296 IN SAVINGS EVERY MONTH!\***

**A LOOK INSIDE THE HOFFMAN'S ENERGY EFFICIENCY.** Lower index = higher efficiency. What does that mean to you? A HERS Index is the industry standard by which a home's energy efficiency is measured. It is also the nationally-recognized system for inspecting and calculating a home's energy performance. A Veridian home receives a rating 56 HERS or better, averaging 51 HERS, compared a typical old used home, which rates at 130 HERS – that's greater than a 70% increase in total energy performance. This means that your dream home will not only look like a dream, but it will run like one too.

\*Estimated average monthly energy bill savings with the Hoffman. The costs were calculated using REM/Rate™ 12.97 and the HERS Score for the reference homes listed in the arrow chart and were published by RESNET, as compared to the typical used home. The typical used and new home scores were determined by the U.S. Department of Energy.

