

The Samuel



3 BEDROOMS • 2 BATHROOMS • 1,656 SQUARE FEET*



SOUTHERN TRADITIONAL



CAPE COD



COTTAGE II



PRAIRIE

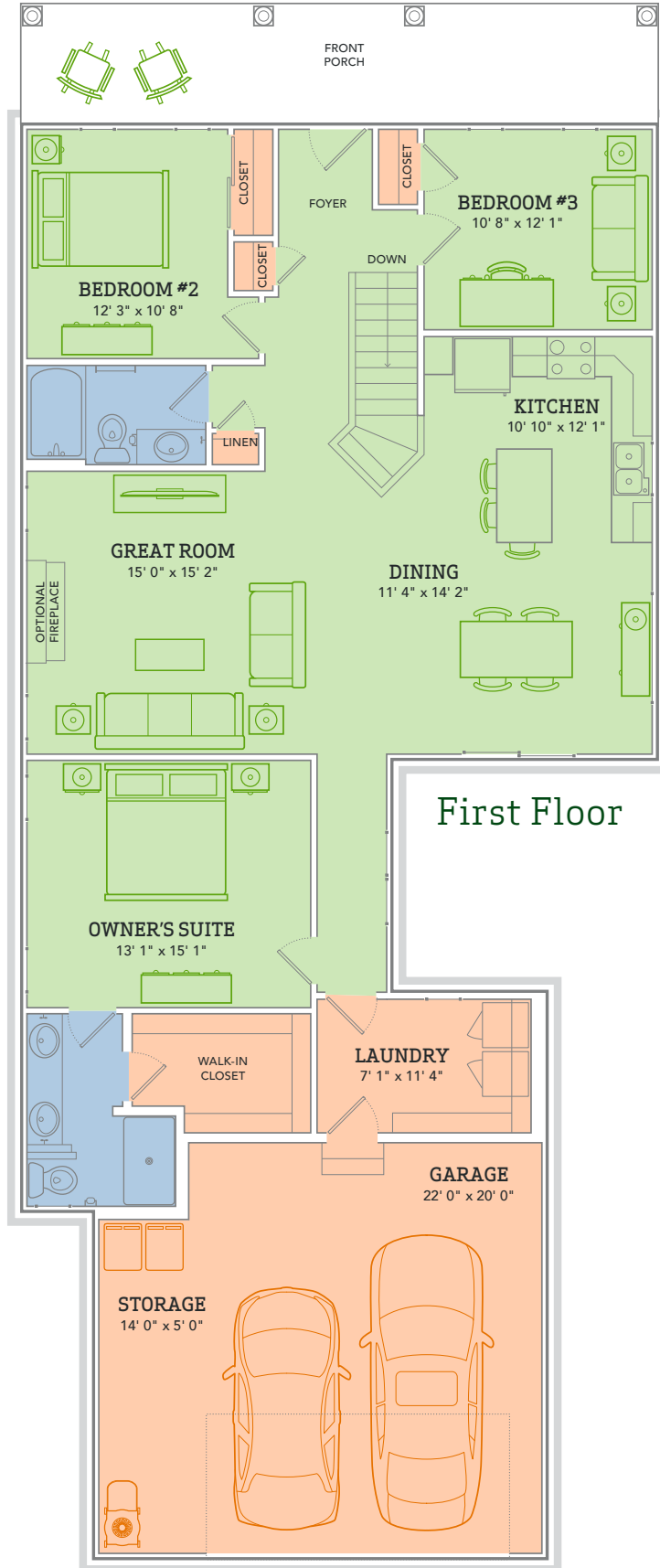
*varies by elevation



WE MAKE BUILDING EASY®. When you build a Veridian home, you get much more than a home designed around you and your dreams. You get the peace of mind that comes with nationally-recognized, award-winning, quality craftsmanship and energy efficiency. You get a home that's constructed using innovative building materials as well as the newest technology and building practices. The result is a high-performing, green and energy efficient home that's a healthier home for you and your pocketbook. And when you build with Veridian Homes, you build with a team of specifically trained experts who make homebuilding easy.

Dream. Build. Live.

DESIGN STUDIO: 6801 South Towne Drive | PHONE: 1.800.726.7397 | WEB: VeridianHomes.com



First Floor

The Samuel

TAKE A STROLL INSIDE THE SAMUEL. You're sure to feel its charm. An open and airy great room and kitchen set the tone. French doors leading into the owner's suite create an air of elegance. Add in the massive front porch, and you'll feel like you're on vacation — right in your very own dream home.

Features

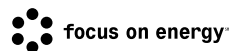
- Large open concept kitchen, dining and great room
- Spacious first floor laundry / mud room
- Convenient kitchen island and breakfast bar
- Additional garage storage
- French doors to owner's suite
- Private walk-in closet in owner's suite
- Full basement with option to finish
- Custom Auburn Ridge® cabinetry
- Smart Home+ technology
- Energy expert certified
- Award-winning high-performance home

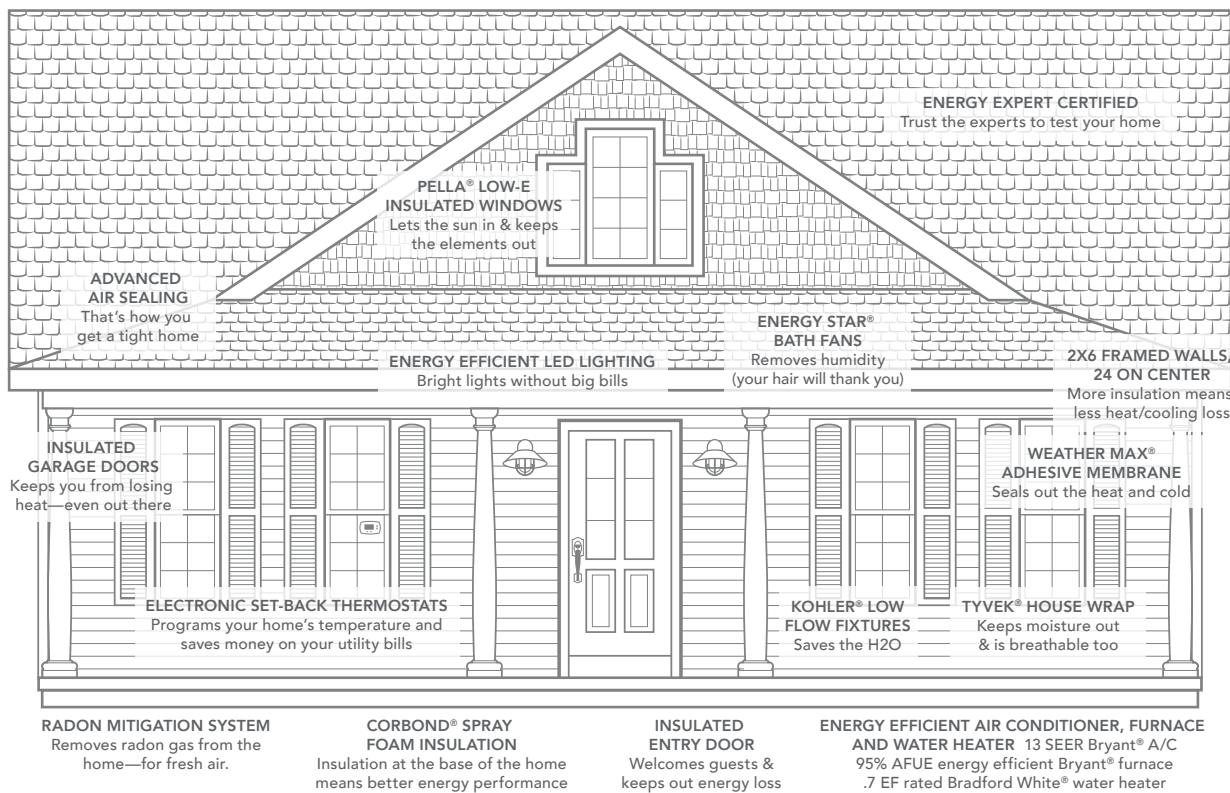
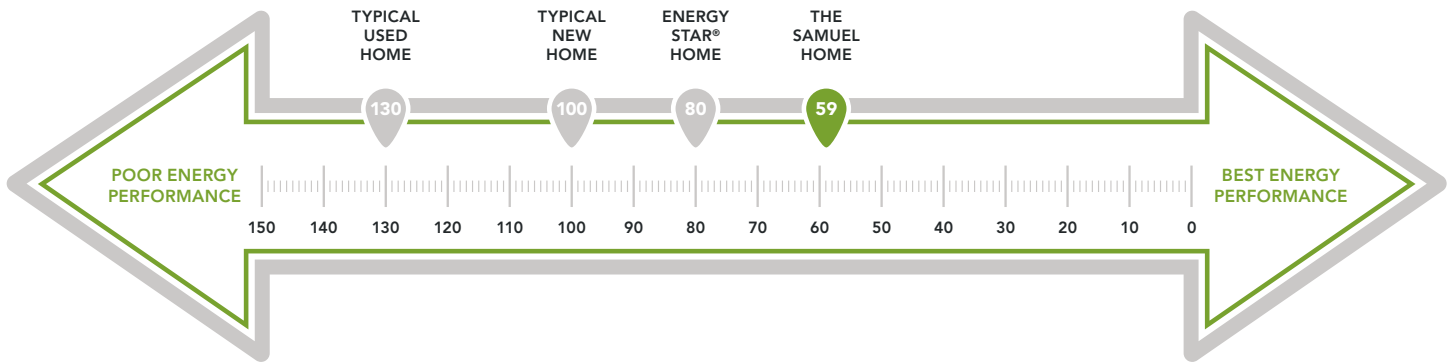
Options

- Finished lower level
- Nine foot, cathedral, vault and tray ceiling options
- Display ledge in foyer
- Skylight windows
- Solid surface countertops
- Personalized closet systems
- Additional green materials / products
- Personalize your home with thousands of options found within our Design Studio



CERTIFIED HIGH-PERFORMING HOMES
BUILDING ENERGY EFFICIENT, GREEN HOMES SINCE 2001





\$201
IN SAVINGS

ESTIMATED AVERAGE MONTHLY ENERGY BILL SAVINGS WITH THE SAMUEL*

A LOOK INSIDE THE SAMUEL'S ENERGY EFFICIENCY. Each point decrease in the HERS Index means a 1% reduction in energy consumption. Based on this, the Samuel is 71% more energy efficient than a typical used home. The HERS Index is a scoring system created by the Residential Energy Services Network (RESNET), and provides comparable energy efficiencies in various homes. Only a RESNET certified independent energy rater can determine a home's score. This energy scale is based on the U.S. Department of Energy's EnergySmart Home Scales. Actual energy savings may vary depending on a number of factors including the number of people living in the household, consumption habits, age/condition of electronics and appliances used, and lifestyle; and are not guaranteed.

*Estimated average monthly energy bill savings with the Samuel. The costs were calculated using REM/Rate™ 12.97 and the HERS Score for the reference homes listed in the arrow chart and were published by RESNET, as compared to the typical used home. The typical used and new home scores were determined by the U.S. Department of Energy.