

THE HARLEQUIN



3 BEDROOMS · 2.5 BATHROOMS · 1,575 SQUARE FEET*



COTTAGE



CRAFTSMAN



FARMHOUSE



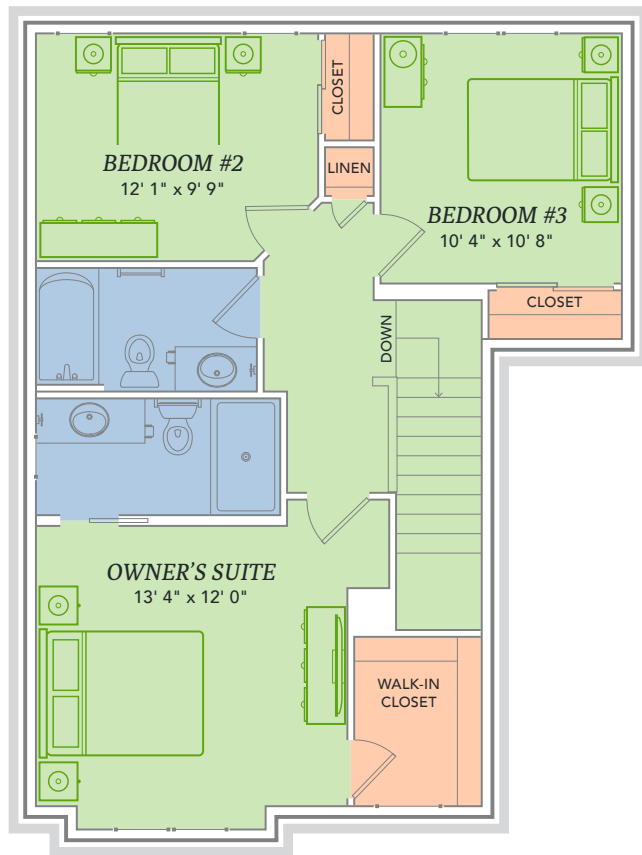
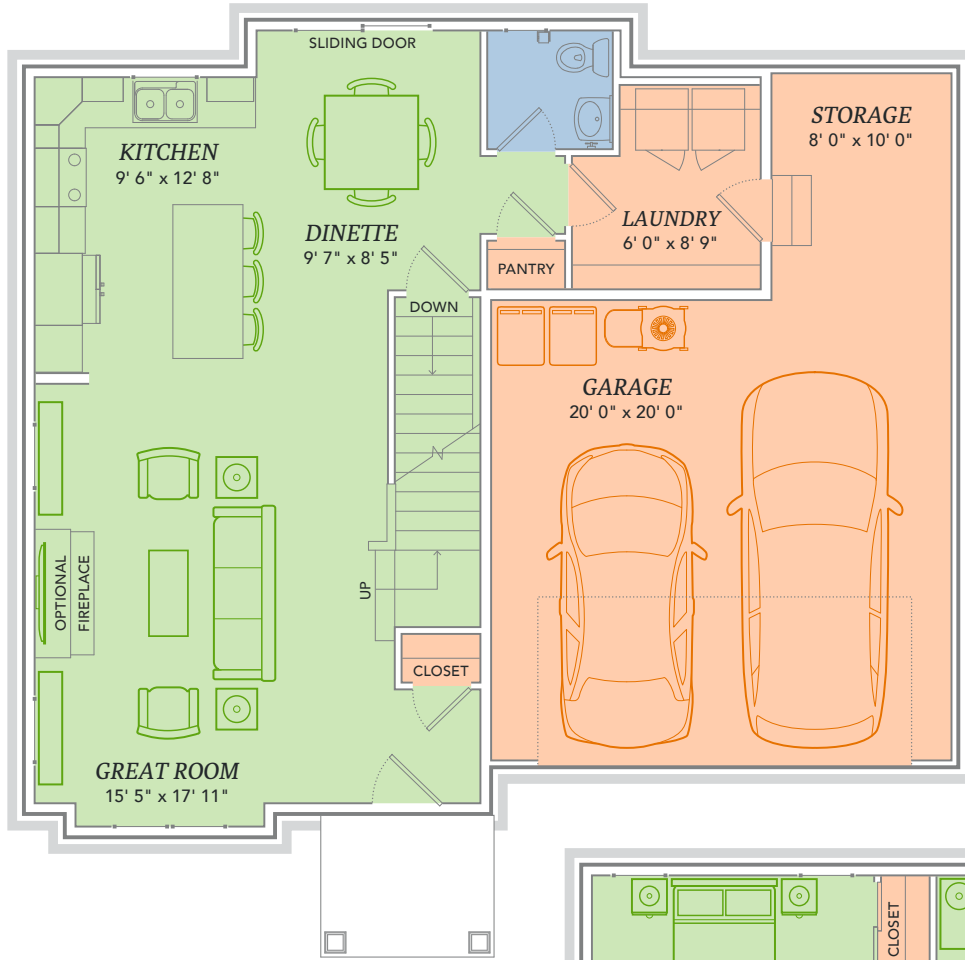
MODERN

*Varies by elevation

WE MAKE BUILDING EASY.® When you build a Veridian home, you get much more than a home designed around you and your dreams. You get the peace of mind that comes with nationally-recognized, award-winning, quality craftsmanship and energy efficiency. You get a home that's constructed using innovative building materials as well as the newest technology and building practices. The result is a high-performing, green and energy efficient home that's a healthier home for you and your pocketbook. And when you build with Veridian Homes, you build with a team of specifically trained experts who make homebuilding easy.

Dream. Build. Live.

DESIGN STUDIO: 6801 South Towne Drive | PHONE: 1.800.726.7397 | WEB: VeridianHomes.com



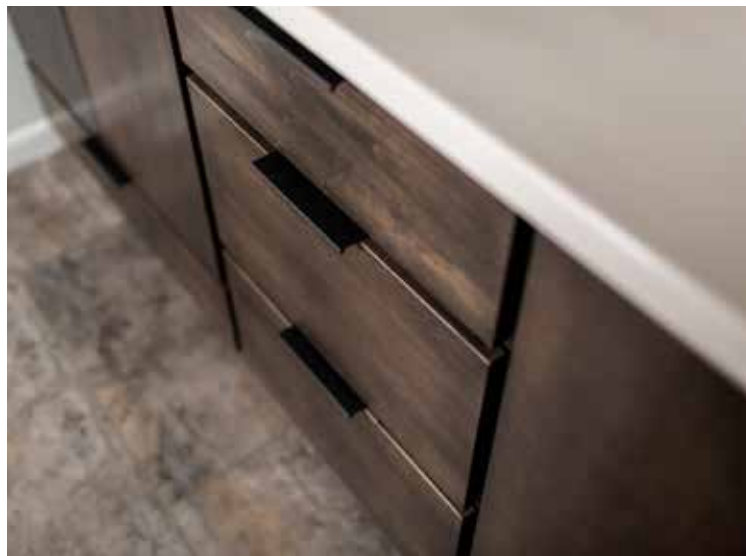
WORK AND PLAY. Play and work. The kitchen island in The Harlequin is fully equipped for both. Mix up your mother’s red velvet cake recipe. Chat with your friends over coffee and scones. Prepare your financials. Store your new pots and pans in the cabinets below. Toast to a happy home. This kitchen island allows you to do it all, within the comfort of your own home. Meet The Harlequin.



*Features from a similar model

Features

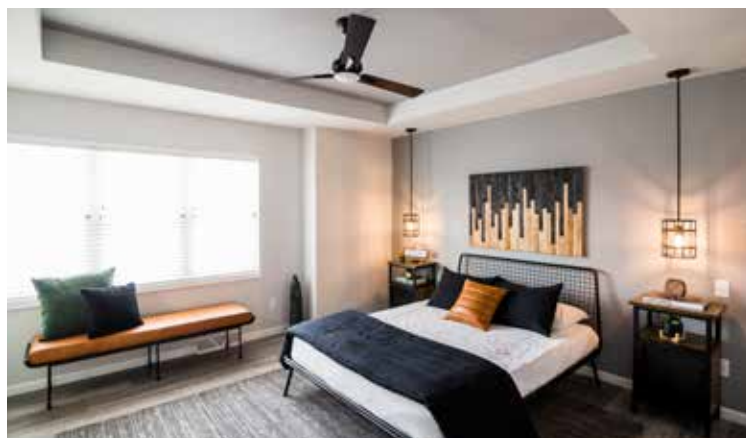
- Open floor plan with spacious kitchen island
- First floor powder room
- Daily station for convenient organization
- Owner’s suite with attached private bath and walk-in closet
- Additional storage space in garage
- Full basement
- Custom Auburn Ridge® cabinetry
- Smart Home+ technology
- Energy expert certified
- Award-winning high-performance home



*Features from a similar model

Options

- Nine foot ceilings
- Tray ceilings
- Finished lower level
- Add additional square footage
- Personalized closet systems
- Custom bookcases, entertainment center and/or built-in storage
- Soaking tub in owner’s suite
- Additional green materials/products
- Personalize your home with thousands of options found within our Design Studio



*Features from a similar model

CERTIFIED HIGH-PERFORMING HOMES
BUILDING ENERGY EFFICIENT, GREEN HOMES SINCE 2001





- Energy Expert Certified
- Insulated Entry Door
- Pella® Low-E Insulated Windows
- Insulated Garage Door
- Electronic Set-Back Thermostats
- Energy Efficient LED Lighting
- Kohler® Low Flow Fixtures
- Energy Star® Bath Fans
- Energy Efficient Air Conditioner, Furnace and Water Heater
- Radon Mitigation System
- 2x6 Framed Walls, 24 on Center
- Tyvek® House Wrap
- Advanced Air Sealing
- Spray Foam Insulation
- Weather Max® Adhesive Membrane



\$296 IN SAVINGS EVERY MONTH!*

A LOOK INSIDE THE HARLEQUIN'S ENERGY EFFICIENCY. Lower index = higher efficiency. What does that mean to you? A HERS Index is the industry standard by which a home's energy efficiency is measured. It is also the nationally-recognized system for inspecting and calculating a home's energy performance. A Veridian home receives a rating 56 HERS or better, averaging 51 HERS, compared a typical old used home, which rates at 130 HERS – that's greater than a 70% increase in total energy performance. This means that your dream home will not only look like a dream, but it will run like one too.

*Estimated average monthly energy bill savings with the Harlequin. The costs were calculated using REM/Rate™ 12.97 and the HERS Score for the reference homes listed in the arrow chart and were published by RESNET, as compared to the typical used home. The typical used and new home scores were determined by the U.S. Department of Energy.

