

THE MAYBECK



4 BEDROOMS · 3.5 BATHROOMS · 3,044 SQUARE FEET*

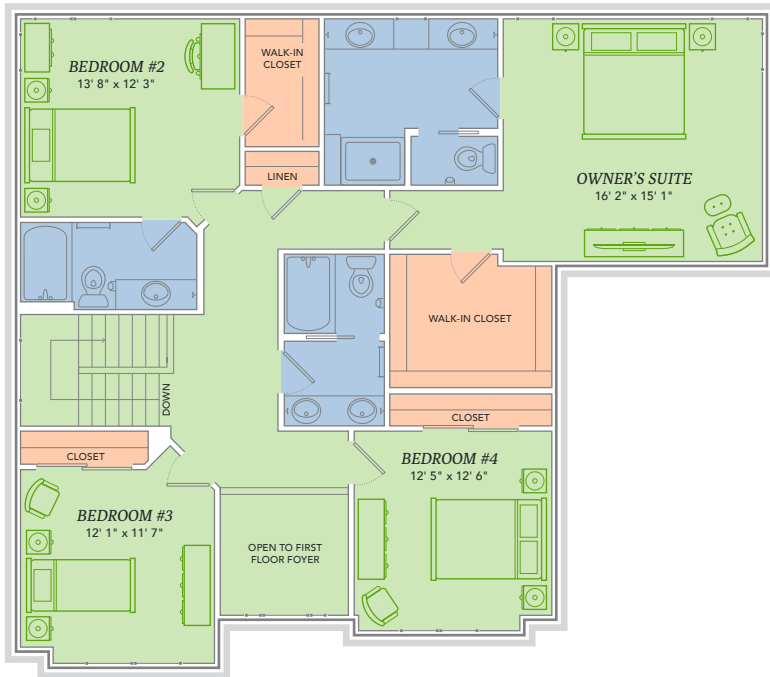
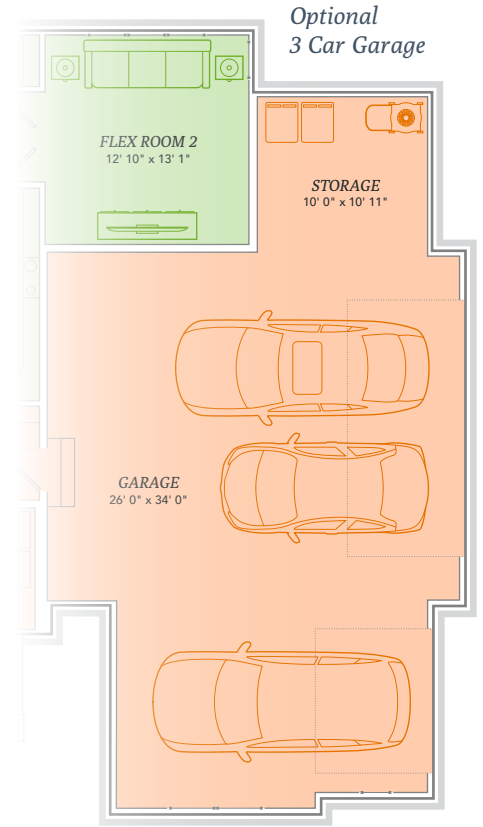


*Varies by elevation

WE MAKE BUILDING EASY.® When you build a Veridian home, you get much more than a home designed around you and your dreams. You get the peace of mind that comes with nationally-recognized, award-winning, quality craftsmanship and energy efficiency. You get a home that's constructed using innovative building materials as well as the newest technology and building practices. The result is a high-performing, green and energy efficient home that's a healthier home for you and your pocketbook. And when you build with Veridian Homes, you build with a team of specifically trained experts who make homebuilding easy.

Dream. Build. Live.

DESIGN STUDIO: 6801 South Towne Drive | PHONE: 1.800.726.7397 | WEB: VeridianHomes.com



Alternative Kitchen Layout



Optional Owner's Suite Bath Layout



THE MAYBECK, named for the Arts and Crafts Movement architect, Bernard Maybeck, is a fine tribute to his legacy. A well thought out design brings form and function to the space. The Maybeck features two flex rooms on the main floor, allowing you to create your own zones. Arts and crafts can be had in the back and perhaps a music room with a baby grand can resonate from the front. What's more, there are two bedroom suites upstairs – a master retreat and a guest oasis. Take some time to appreciate history, but also make sure to take time to appreciate the now, in your new home.

Features

- Two story foyer
- Kitchen open to living and dining areas
- Large kitchen island
- Dining space bumped out
- Two flex rooms for formal dining, office, etc.
- Custom Auburn Ridge® cabinetry
- Owner's suite with walk-in closet and private bath
- Bedroom 2 also features on-suite bath
- Separate laundry and mudroom on first floor
- Fireplace in great room
- Nine foot ceilings on first floor
- Smart Home+ technology
- Energy expert certified
- Award-winning, high-performance home

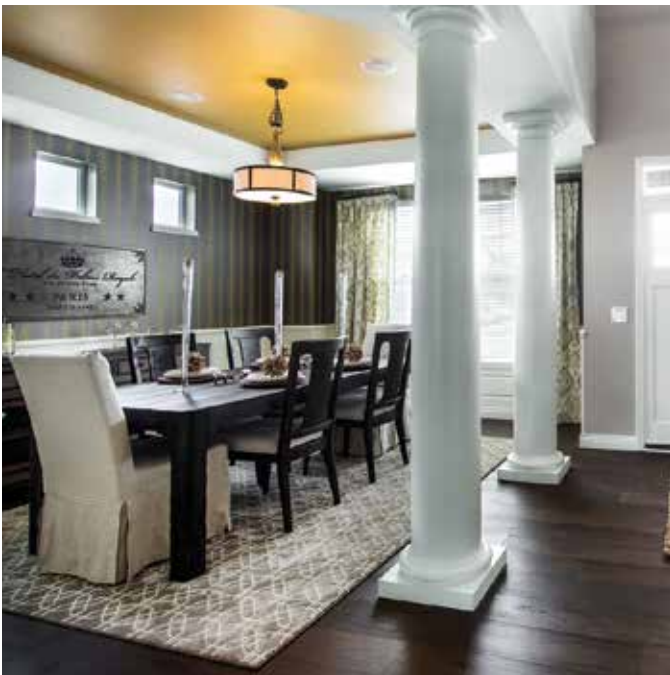
Options

- Tray ceiling options
- Custom built-ins
- Butler's pantry, wine or coffee bar
- Personalized closet systems
- Whirlpool and soaking tub options
- Additional green materials/products
- Personalize your home with thousands of options found within our Design Studio

Elevations



CERTIFIED HIGH-PERFORMING HOMES
BUILDING ENERGY EFFICIENT, GREEN HOMES SINCE 2001





- Energy Expert Certified
- Insulated Entry Door
- Pella® Low-E Insulated Windows
- Insulated Garage Door
- Electronic Set-Back Thermostats
- Energy Efficient LED Lighting
- Kohler® Low Flow Fixtures
- Energy Star® Bath Fans
- Energy Efficient Air Conditioner, Furnace and Water Heater
- Radon Mitigation System
- 2x6 Framed Walls, 24 on Center
- Tyvek® House Wrap
- Advanced Air Sealing
- Spray Foam Insulation
- Weather Max® Adhesive Membrane



\$296 IN SAVINGS EVERY MONTH!*

A LOOK INSIDE THE MAYBECK'S ENERGY EFFICIENCY. Lower index = higher efficiency. What does that mean to you? A HERS Index is the industry standard by which a home's energy efficiency is measured. It is also the nationally-recognized system for inspecting and calculating a home's energy performance. A Veridian home receives a rating 56 HERS or better, averaging 51 HERS, compared a typical old used home, which rates at 130 HERS – that's greater than a 70% increase in total energy performance. This means that your dream home will not only look like a dream, but it will run like one too.

*Estimated average monthly energy bill savings with the Maybeck. The costs were calculated using REM/Rate™ 12.97 and the HERS Score for the reference homes listed in the arrow chart and were published by RESNET, as compared to the typical used home. The typical used and new home scores were determined by the U.S. Department of Energy.

