

The Adler



3 BEDROOMS • 3 BATHROOMS • 2,047 SQUARE FEET*



ADLER I - BRICK

ADLER I - STONE



ADLER II - BRICK



ADLER II - STONE



ADLER III - BRICK



ADLER III - STONE



*varies by elevation



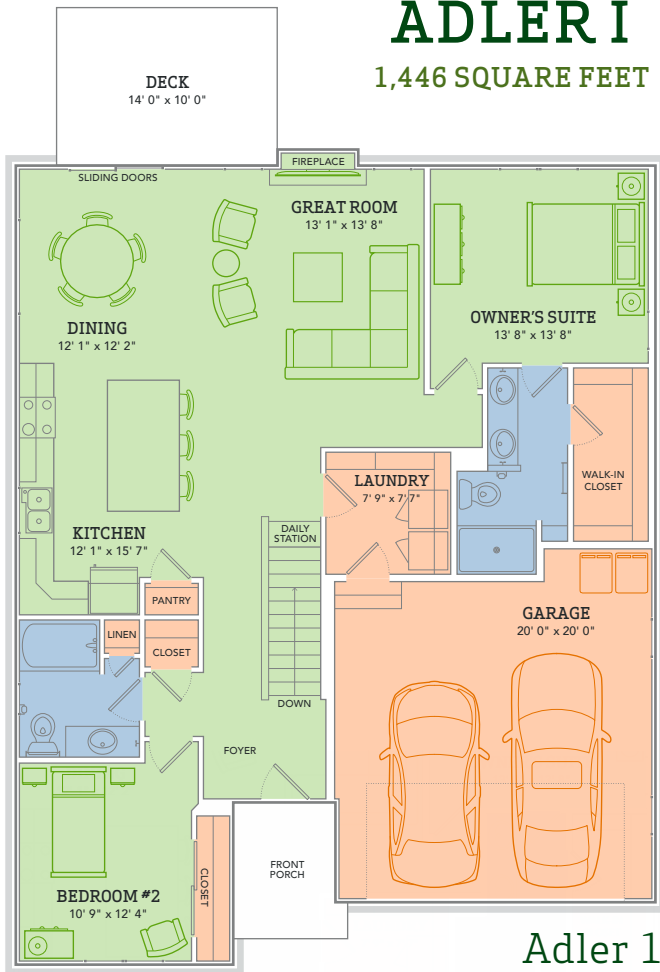
WE MAKE BUILDING EASY®. When you build a Veridian home, you get much more than a home designed around you and your dreams. You get the peace of mind that comes with nationally-recognized, award-winning, quality craftsmanship and energy efficiency. You get a home that's constructed using innovative building materials as well as the newest technology and building practices. The result is a high-performing, green and energy efficient home that's a healthier home for you and your pocketbook. And when you build with Veridian Homes, you build with a team of specifically trained experts who make homebuilding easy.

Dream. Build. Live.

DESIGN STUDIO: 6801 South Towne Drive | PHONE: 1.800.726.7397 | WEB: VeridianHomes.com

ADLER I

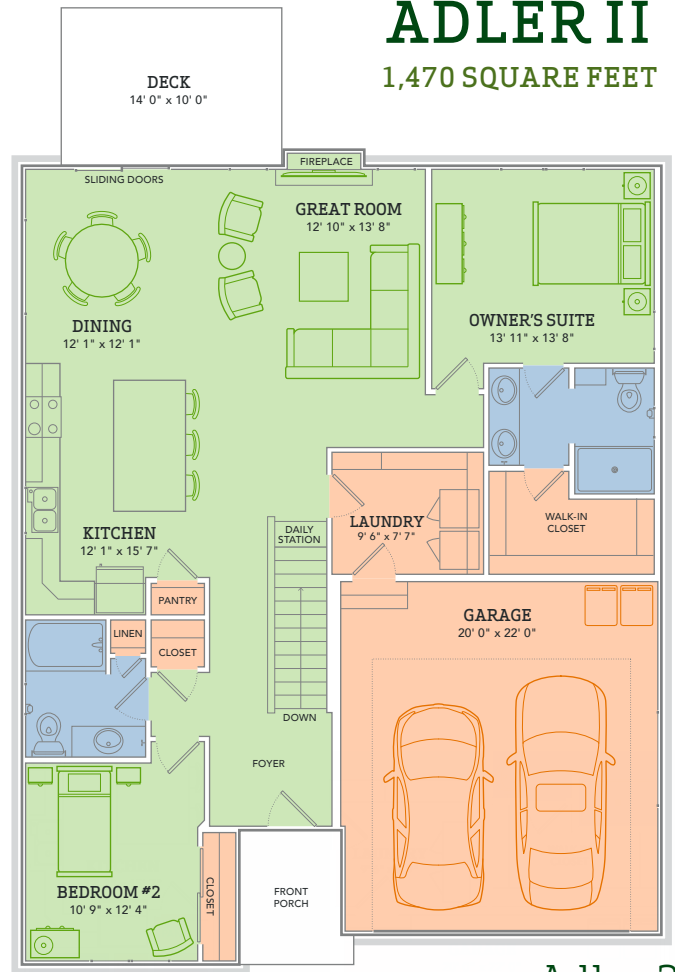
1,446 SQUARE FEET



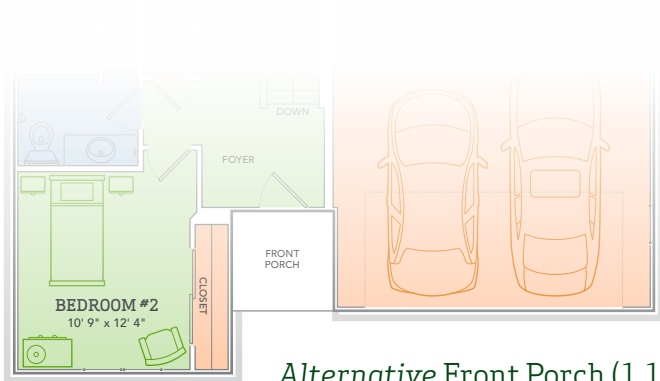
Adler 1

ADLER II

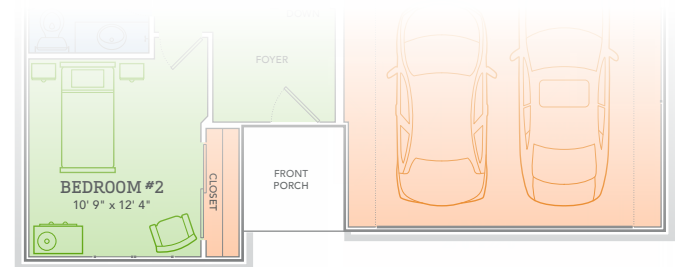
1,470 SQUARE FEET



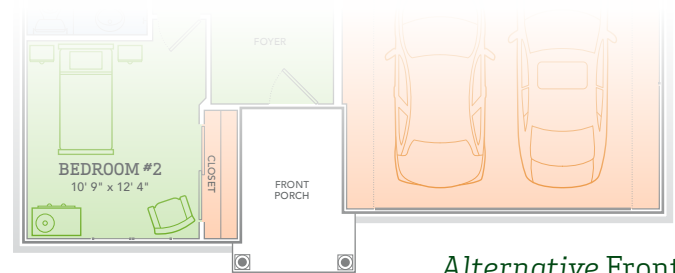
Adler 2



Alternative Front Porch (1.1)



Alternative Front Porch (2.1)



Alternative Front Porch (2.2)



The Adler

THE ADLER HAS ALL THE AMENITIES IN ONE HUMBLE FLOORPLAN, BECAUSE WHO SAID SIMPLICITY HAD TO BE BORING? This remarkable ranch home features a welcoming foyer, an airy great room and kitchen, a spacious laundry room, and best of all, each bedroom has an adjacent bathroom. So host a dinner party or enjoy a cocktail on the deck with friends, and when the night is over you can rest easy with the Adler.

Features

- Ranch style condo
- Nine foot ceilings throughout first floor
- Fireplace in great room
- Kitchen open to living and dining areas
- Full basement
- Convenient kitchen island with breakfast bar, and pantry
- Custom Auburn Ridge® cabinetry
- Owner's suite features large walk-in closet and private bath
- First floor laundry/mudroom
- Finished lower level
- Finished deck
- Smart Home+ technology
- Energy expert certified
- Award-winning, high-performance home

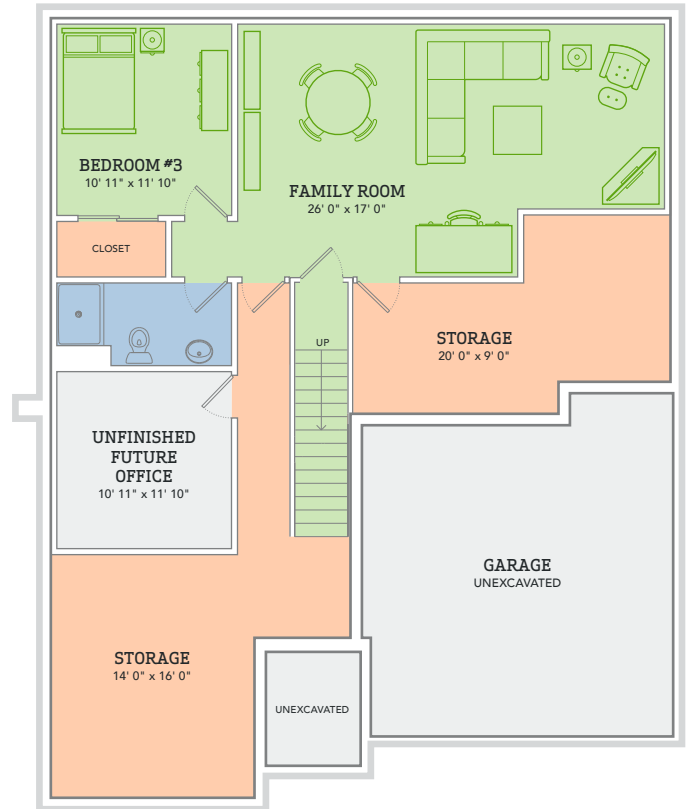
Options

- Custom built-ins
- Tray ceiling in owner's suite
- Personalized closet systems
- Additional green materials/products
- Personalize your home with thousands of options found within our Design Studio

FINISHED BASEMENT

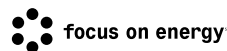
601 SQUARE FEET

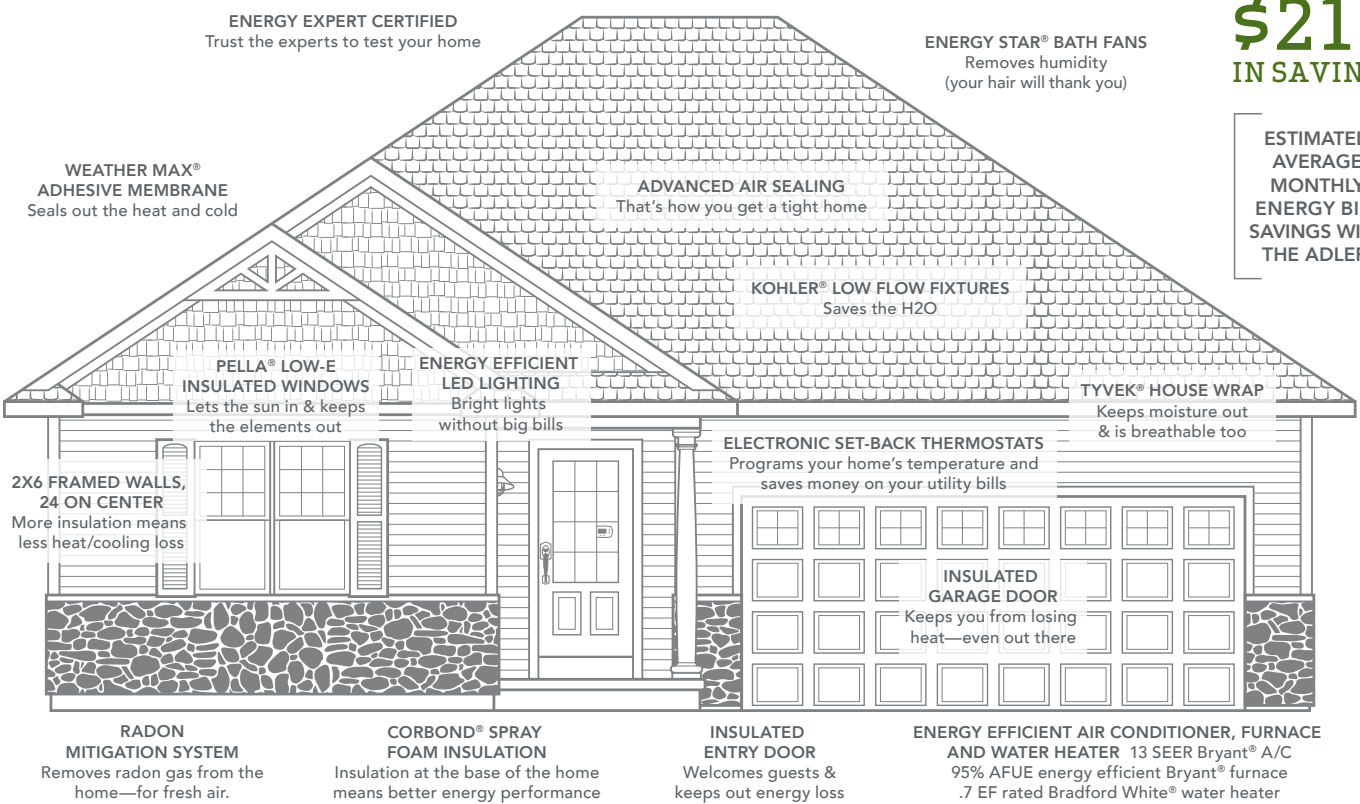
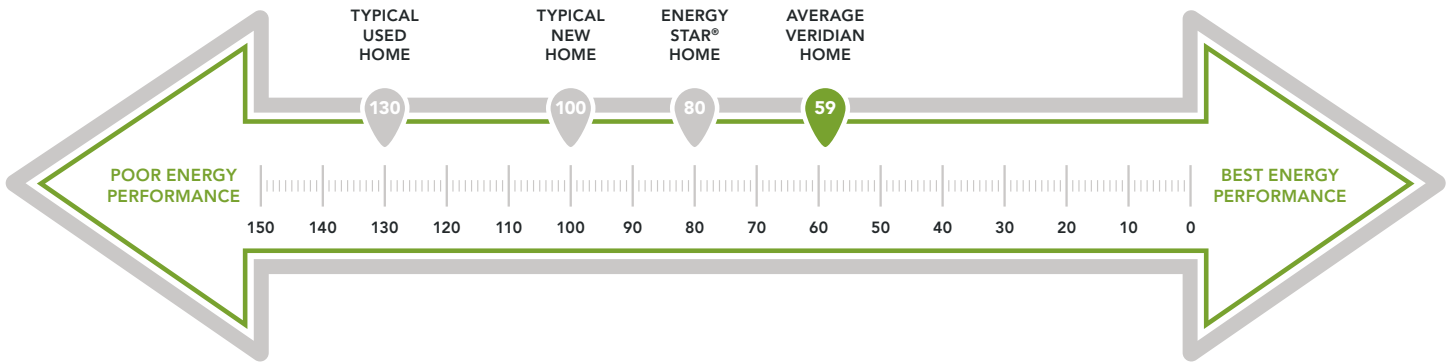
*Basement window placement will vary by homesite



*features from a similar model

CERTIFIED HIGH-PERFORMING HOMES
BUILDING ENERGY EFFICIENT, GREEN HOMES SINCE 2001





\$212
IN SAVINGS

ESTIMATED AVERAGE MONTHLY ENERGY BILL SAVINGS WITH THE ADLER*

A LOOK INSIDE THE ADLER'S ENERGY EFFICIENCY. Each point decrease in the HERS Index means a 1% reduction in energy consumption. Based on this, the Adler is 74% more energy efficient than a typical used home. The HERS Index is a scoring system created by the Residential Energy Services Network (RESNET), and provides comparable energy efficiencies in various homes. Only a RESNET certified independent energy rater can determine a home's score. This energy scale is based on the U.S. Department of Energy's EnergySmart Home Scales. Actual energy savings may vary depending on a number of factors including the number of people living in the household, consumption habits, age/condition of electronics and appliances used, and lifestyle; and are not guaranteed.

*Estimated average monthly energy bill savings with the average Veridian home. The costs were calculated using REM/Rate™ 12.97 and the HERS Score for the reference homes listed in the arrow chart and were published by RESNET, as compared to the typical used home. The typical used and new home scores were determined by the U.S. Department of Energy.