

The Carmichael



4 BEDROOMS • 2.5 BATHROOMS • 2,616 SQUARE FEET*



*varies by elevation

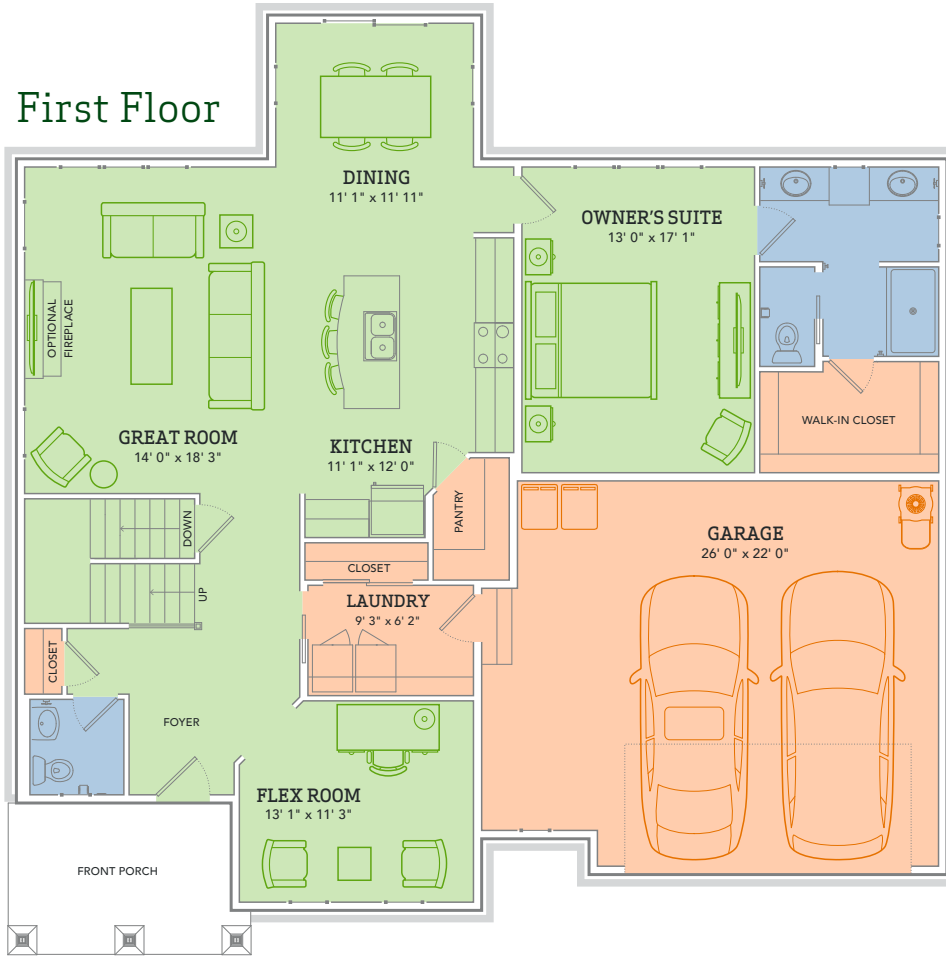


WE MAKE BUILDING EASY® When you build a Veridian home, you get much more than a home designed around you and your dreams. You get the peace of mind that comes with nationally-recognized, award-winning, quality craftsmanship and energy efficiency. You get a home that's constructed using innovative building materials as well as the newest technology and building practices. The result is a high-performing, green and energy efficient home that's a healthier home for you and your pocketbook. And when you build with Veridian Homes, you build with a team of specifically trained experts who make homebuilding easy.

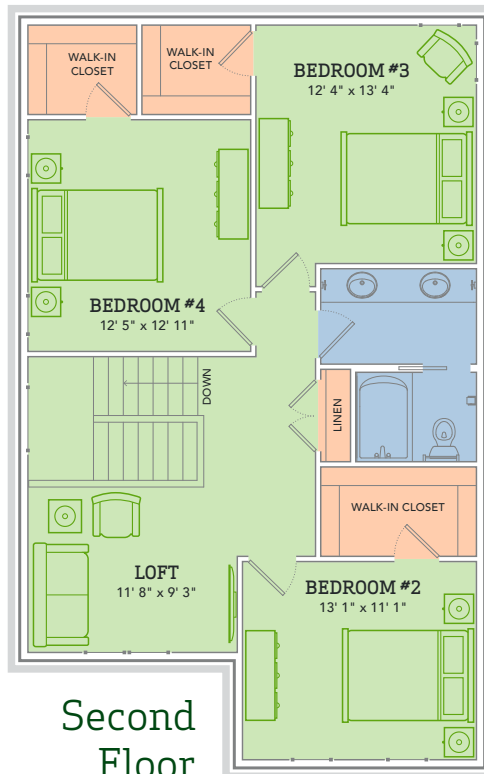
Dream. Build. Live.

DESIGN STUDIO: 6801 South Towne Drive | PHONE: 1.800.726.7397 | WEB: VeridianHomes.com

First Floor



Second Floor



The Carmichael

GO AHEAD, WALTZ YOUR WAY IN. Make an entrance. You'd be silly not to after catching sight of that whimsical two-story foyer. But it's only a taste of what's to come. Meet The Carmichael.

Features

- Kitchen open to living and dining areas
- Large kitchen island with extra entertaining area
- Walk-in kitchen pantry
- Flex room for formal dining, office, etc.
- Loft area on second floor
- Custom Auburn Ridge® cabinetry
- First floor owner's suite with walk-in closet and private bath
- Spacious laundry/mudroom
- Smart Home+ technology
- Energy expert certified
- Award-winning, high-performance home

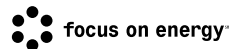
Options

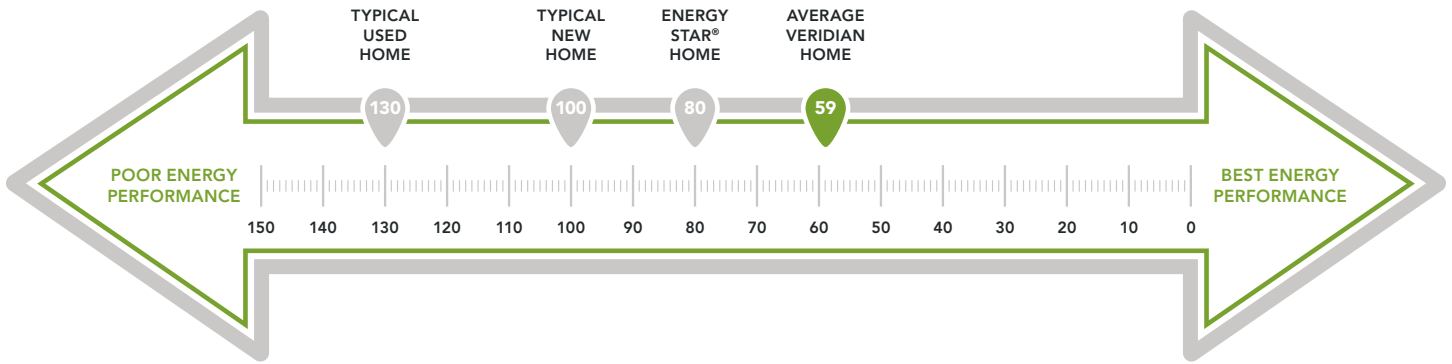
- Tray ceiling options
- Custom built-ins
- Butler's pantry, wine or coffee bar
- Personalized closet systems
- Whirlpool and soaking tub options
- Additional green materials/products
- Personalize your home with thousands of options found within our Design Studio



*features from a similar model

CERTIFIED HIGH-PERFORMING HOMES
BUILDING ENERGY EFFICIENT, GREEN HOMES SINCE 2001





WEATHER MAX® ADHESIVE MEMBRANE
Seals out the heat and cold

TYVEK® HOUSE WRAP
Keeps moisture out & is breathable too

KOHLER® LOW FLOW FIXTURES
Saves the H₂O

PELLA® LOW-E INSULATED WINDOWS
Lets the sun in & keeps the elements out

ELECTRONIC SET-BACK THERMOSTATS
Programs your home's temperature and saves money on your utility bills

INSULATED ENTRY DOOR
Welcomes guests & keeps out energy loss

CORBOND® SPRAY FOAM INSULATION
Insulation at the base of the home means better energy performance

\$193
IN SAVINGS

ESTIMATED AVERAGE MONTHLY ENERGY BILL SAVINGS WITH THE CARMICHAEL*

ENERGY EXPERT CERTIFIED
Trust the experts to test your home

ADVANCED AIR SEALING
That's how you get a tight home

ENERGY STAR® BATH FANS
Removes humidity (your hair will thank you)

2X6 FRAMED WALLS, 24 ON CENTER
More insulation means less heat/cooling loss

ENERGY EFFICIENT LED LIGHTING
Bright lights without big bills

INSULATED GARAGE DOORS
Keeps you from losing heat—even out there

ENERGY EFFICIENT AIR CONDITIONER, FURNACE AND WATER HEATER 13 SEER Bryant® A/C
95% AFUE energy efficient Bryant® furnace
.7 EF rated Bradford White® water heater

A LOOK INSIDE THE CARMICHAEL'S ENERGY EFFICIENCY. Each point decrease in the HERS Index means a 1% reduction in energy consumption. Based on this, the Carmichael is 71% more energy efficient than a typical used home. The HERS Index is a scoring system created by the Residential Energy Services Network (RESNET), and provides comparable energy efficiencies in various homes. Only a RESNET certified independent energy rater can determine a home's score. This energy scale is based on the U.S. Department of Energy's EnergySmart Home Scales. Actual energy savings may vary depending on a number of factors including the number of people living in the household, consumption habits, age/condition of electronics and appliances used, and lifestyle; and are not guaranteed.

*Estimated average monthly energy bill savings with the Carmichael. The costs were calculated using REM/Rate™ 12.97 and the HERS Score for the reference homes listed in the arrow chart and were published by RESNET, as compared to the typical used home. The typical used and new home scores were determined by the U.S. Department of Energy.