

THE OLIVE



4 BEDROOMS · 3.5 BATHROOMS · 4,061 SQUARE FEET*



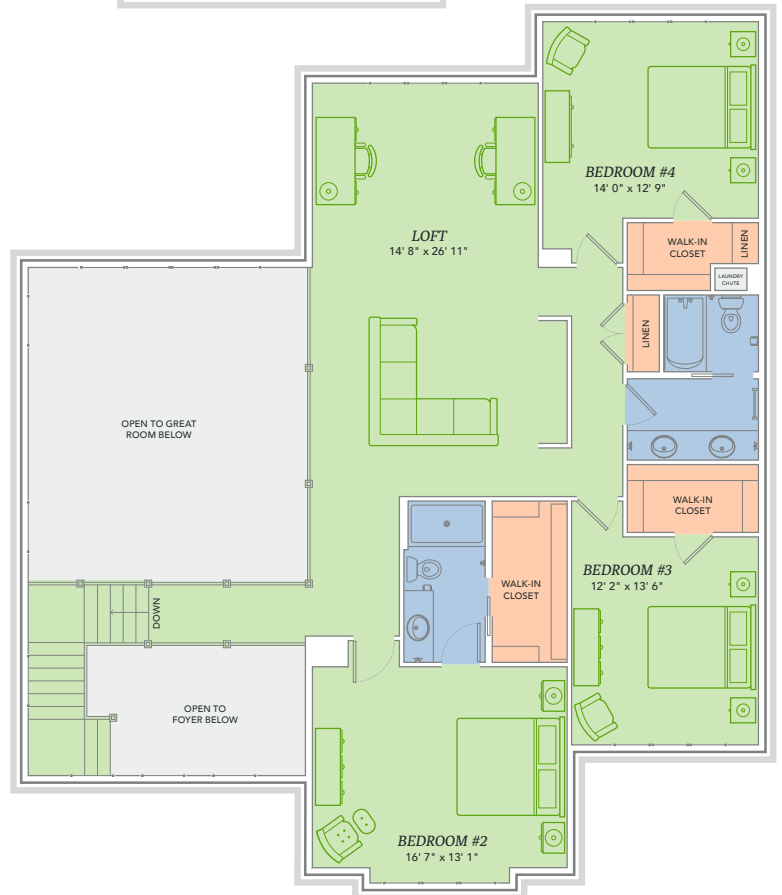
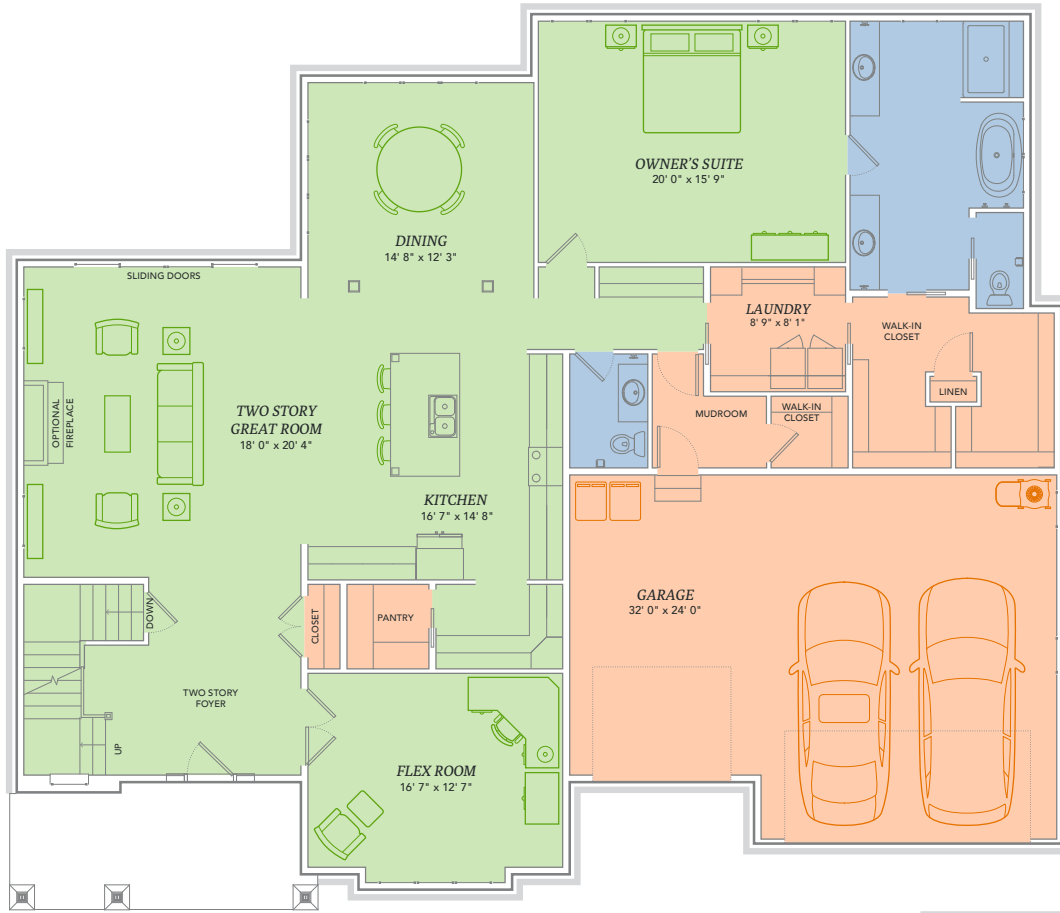
COTTAGE

*Varies by elevation

WE MAKE BUILDING EASY.® When you build a Veridian home, you get much more than a home designed around you and your dreams. You get the peace of mind that comes with nationally-recognized, award-winning, quality craftsmanship and energy efficiency. You get a home that's constructed using innovative building materials as well as the newest technology and building practices. The result is a high-performing, green and energy efficient home that's a healthier home for you and your pocketbook. And when you build with Veridian Homes, you build with a team of specifically trained experts who make homebuilding easy.

Dream. Build. Live.

DESIGN STUDIO: 6801 South Towne Drive | PHONE: 1.800.726.7397 | WEB: VeridianHomes.com



WE'RE THRILLED TO INTRODUCE YOU TO THE OLIVE. The home plan that was selected for the debut of The Generous Home program. It has all the bells and whistles you'd expect from a Parade of Homes home, like a take-your-breath-away, two-story great room, a robust butler's pantry, a cozy fireplace in the owner's suite, custom Auburn Ridge cabinetry and more. We could go on and on forever boasting about all of the great features The Olive has to offer. But it's probably best if you just check them out for yourself.

Features

- Two-story great room and foyer
- Large kitchen island
- Flex room for office, crafting, music, etc.
- Dining space for entertaining family and friends
- Butler's pantry, wine or coffee bar
- Three-car garage
- Custom Auburn Ridge® cabinetry
- First floor owner's suite with expansive walk-in closet and private bath
- Spacious mudroom with closet for additional storage
- First floor laundry connected to walk-in closet
- Nine foot ceilings on first floor
- Large loft space open to great room, perfect for homework station, game nights
- Smart Home+ technology
- Energy expert certified
- Award-winning, high-performance home



Options

- Tray or vaulted ceilings
- Finished lower level
- Whirlpool options
- Custom built-ins
- Personalized closet systems
- Additional green materials/products



CERTIFIED HIGH-PERFORMING HOMES
BUILDING ENERGY EFFICIENT, GREEN HOMES SINCE 2001



- Energy Expert Certified
- Insulated Entry Door
- Pella® Low-E Insulated Windows
- Insulated Garage Door
- Electronic Set-Back Thermostats
- Energy Efficient LED Lighting
- Kohler® Low Flow Fixtures
- Energy Star® Bath Fans
- Energy Efficient Air Conditioner, Furnace and Water Heater
- Radon Mitigation System
- 2x6 Framed Walls, 24 on Center
- Tyvek® House Wrap
- Advanced Air Sealing
- Spray Foam Insulation
- Weather Max® Adhesive Membrane



\$296 IN SAVINGS EVERY MONTH!*

A LOOK INSIDE THE OLIVE'S ENERGY EFFICIENCY. Lower index = higher efficiency. What does that mean to you? A HERS Index is the industry standard by which a home's energy efficiency is measured. It is also the nationally-recognized system for inspecting and calculating a home's energy performance. A Veridian home receives a rating 56 HERS or better, averaging 51 HERS, compared a typical old used home, which rates at 130 HERS – that's greater than a 70% increase in total energy performance. This means that your dream home will not only look like a dream, but it will run like one too.

*Estimated average monthly energy bill savings with the Olive. The costs were calculated using REM/Rate™ 12.97 and the HERS Score for the reference homes listed in the arrow chart and were published by RESNET, as compared to the typical used home. The typical used and new home scores were determined by the U.S. Department of Energy.

