

# THE HUDSON



4 BEDROOMS · 2.5 BATHROOMS · 2,172 SQUARE FEET\*



FARMHOUSE A



COTTAGE



CRAFTSMAN



FARMHOUSE B



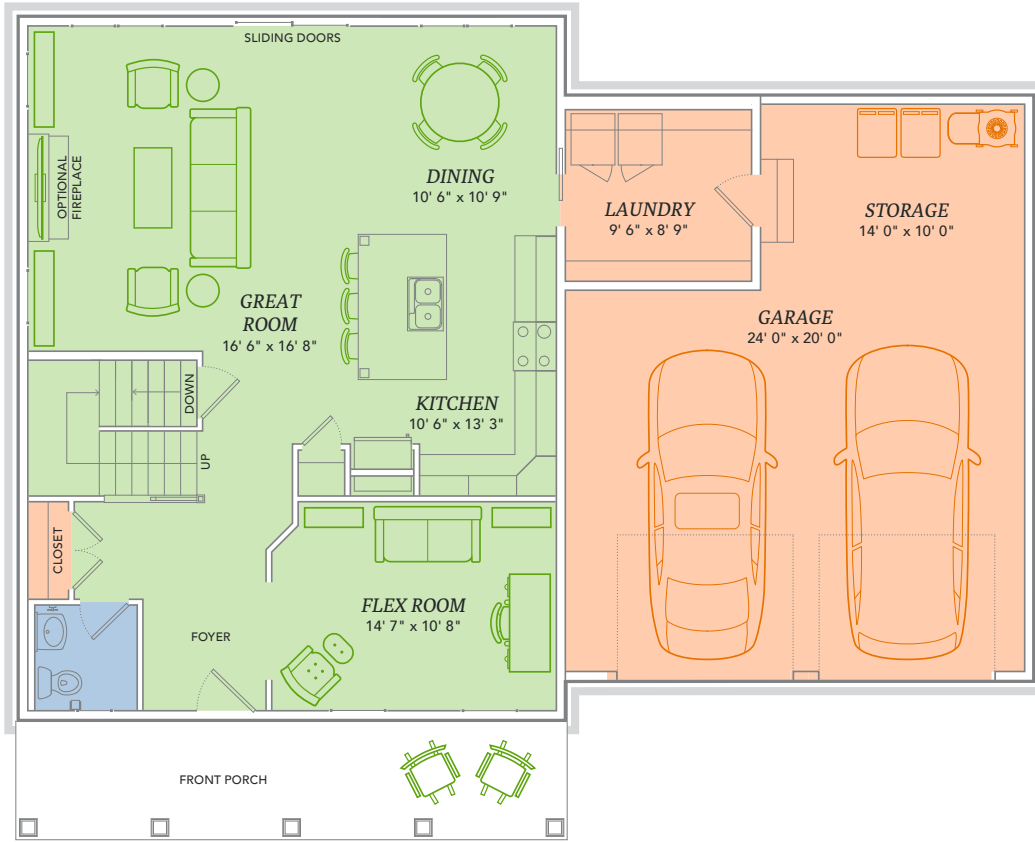
PRAIRIE

\*Varies by elevation

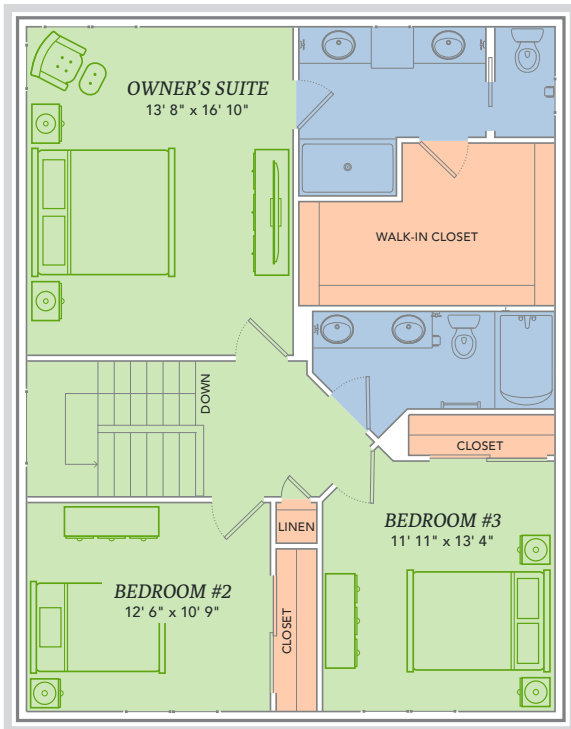
**WE MAKE BUILDING EASY.®** When you build a Veridian home, you get much more than a home designed around you and your dreams. You get the peace of mind that comes with nationally-recognized, award-winning, quality craftsmanship and energy efficiency. You get a home that's constructed using innovative building materials as well as the newest technology and building practices. The result is a high-performing, green and energy efficient home that's a healthier home for you and your pocketbook. And when you build with Veridian Homes, you build with a team of specifically trained experts who make homebuilding easy.

*Dream. Build. Live.*

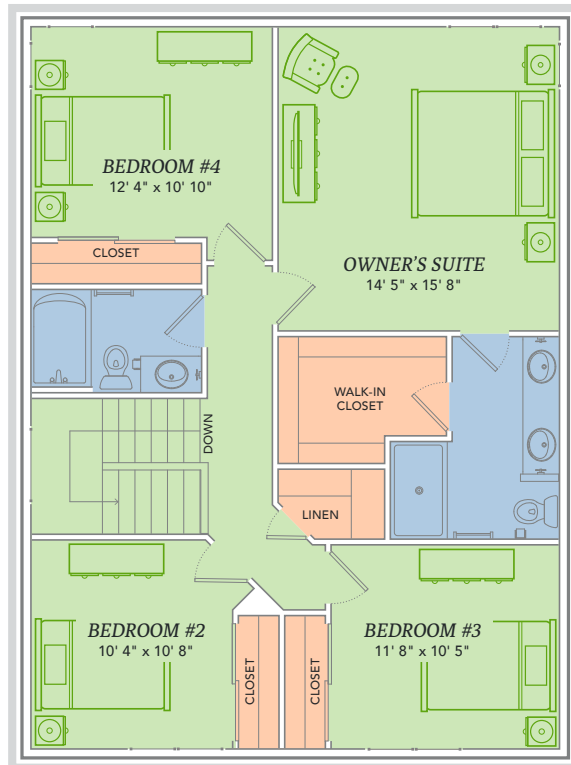
DESIGN STUDIO: 6801 South Towne Drive | PHONE: 1.800.726.7397 | WEB: VeridianHomes.com



Second Floor with 3 Bedrooms



Second Floor with 4 Bedrooms



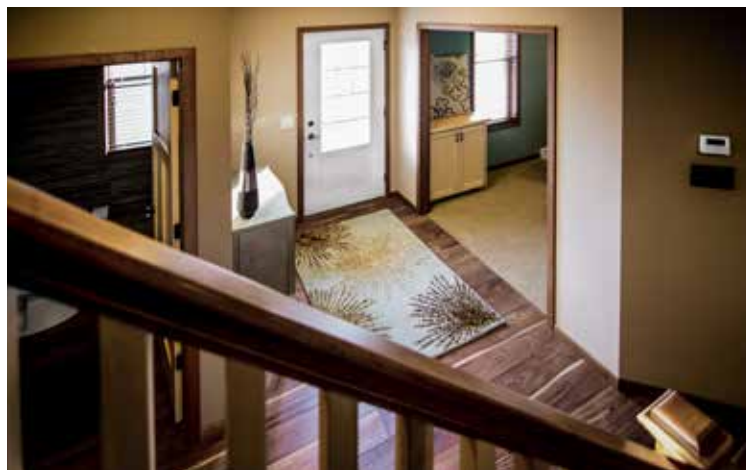
A **FRONT PORCH** is a home's way of saying "Howdy, neighbor!" The Hudson offers the perfect place for setting up a porch swing and watching the world go by. Wave to the UPS driver. Invite a neighbor over for a cold one. Get to know the bike-riding kids and dog-walkers by name. Of course, there are times when you just want to read a book, too. That's why The Hudson has sliding glass doors leading to your private backyard – otherwise known as the howdy-free zone.

## Features

- Large, open floor plan
- Nine foot ceilings on first floor
- Kitchen island with breakfast bar and sink
- Flex room for home office, library, etc.
- Double bowl vanity in owner's bathroom
- Extra depth in garage for storage
- Large first floor laundry
- Full basement
- Custom Auburn Ridge® cabinetry
- Smart Home+ technology
- Energy expert certified
- Award-winning high-performance home

## Options

- Built-in storage/window seat in the second floor hall
- Custom bookcases and/or entertainment center
- Tray ceiling in the owner's suite
- Tile shower or soaking tub in owner's bathroom
- Three car tandem garage with expanded laundry
- French doors or arched opening on flex room
- Loft area in place of bedroom #2
- Personalized closet systems
- Finished lower level
- Personalize your home with thousands of options found within our Design Studio



**CERTIFIED HIGH-PERFORMING HOMES**  
BUILDING ENERGY EFFICIENT, GREEN HOMES SINCE 2001





- Energy Expert Certified
- Insulated Entry Door
- Pella® Low-E Insulated Windows
- Insulated Garage Door
- Electronic Set-Back Thermostats
- Energy Efficient LED Lighting
- Kohler® Low Flow Fixtures
- Energy Star® Bath Fans
- Energy Efficient Air Conditioner, Furnace and Water Heater
- Radon Mitigation System
- 2x6 Framed Walls, 24 on Center
- Tyvek® House Wrap
- Advanced Air Sealing
- Spray Foam Insulation
- Weather Max® Adhesive Membrane



**\$296 IN SAVINGS EVERY MONTH!\***

**A LOOK INSIDE THE HUDSON'S ENERGY EFFICIENCY.** Lower index = higher efficiency. What does that mean to you? A HERS Index is the industry standard by which a home's energy efficiency is measured. It is also the nationally-recognized system for inspecting and calculating a home's energy performance. A Veridian home receives a rating 56 HERS or better, averaging 51 HERS, compared a typical old used home, which rates at 130 HERS – that's greater than a 70% increase in total energy performance. This means that your dream home will not only look like a dream, but it will run like one too.

\*Estimated average monthly energy bill savings with the Hudson. The costs were calculated using REM/Rate™ 12.97 and the HERS Score for the reference homes listed in the arrow chart and were published by RESNET, as compared to the typical used home. The typical used and new home scores were determined by the U.S. Department of Energy.

