

ACACIA RIDGE

WEST MADISON



Trees and landscaping may vary.
Trails/paths and park detail subject to change without notice.

Dream. Build. Live.

DESIGN STUDIO: 6801 South Towne Dr, Madison WI 53713

PHONE: 608.226.3000 | WEB: VeridianHomes.com



VERIDIAN HOMES

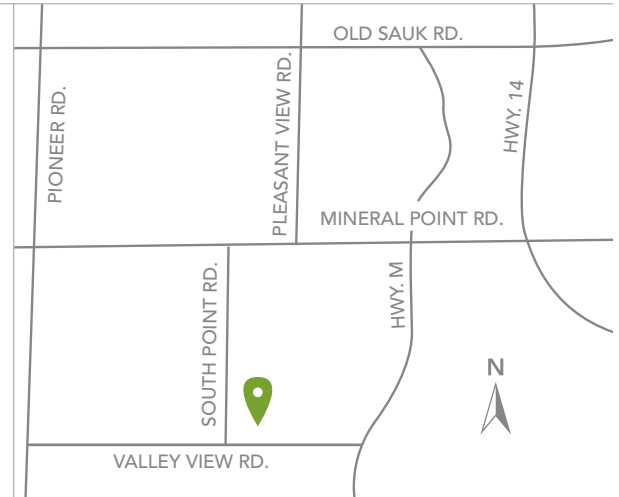
ACACIA RIDGE

WEST MADISON

FEATURING AN ABUNDANCE OF SINGLE FAMILY HOMESITES AND CONVENIENTLY LOCATED ON MADISON'S WEST SIDE, Acacia Ridge is the neighborhood that checks off all the boxes on your list. Future neighborhood elementary school, Check. Parks, playgrounds, and beautiful walking trails, Check. A short drive to a variety of restaurants, golf courses, and shopping, Check. Fun and memories just waiting to be made, Check. Welcome home to Acacia Ridge.



Photos are representative, not actual photos at Acacia Ridge.



DIRECTIONS

Take Mineral Point Road West, turn left on South Point Road and turn left on Watts Road.



SCHOOLS

Olson Elementary School
Toki Middle School
Memorial High School

HIGHWAY

5 minutes from Hwy. 12/18

AIRPORT

30 minutes from Dane County
Regional Airport

LIBRARY

7 minutes from Alicia
Ashman Library

HOSPITALS

19 minutes from UW Hospital
20 minutes from Meriter

SHOPPING

8 minutes from West Towne Mall
10 minutes from Greenway Station
15 minutes from Hilldale Shopping Center