

THE BECKET



4 BEDROOMS · 3.5 BATHROOMS · 3,459 SQUARE FEET*

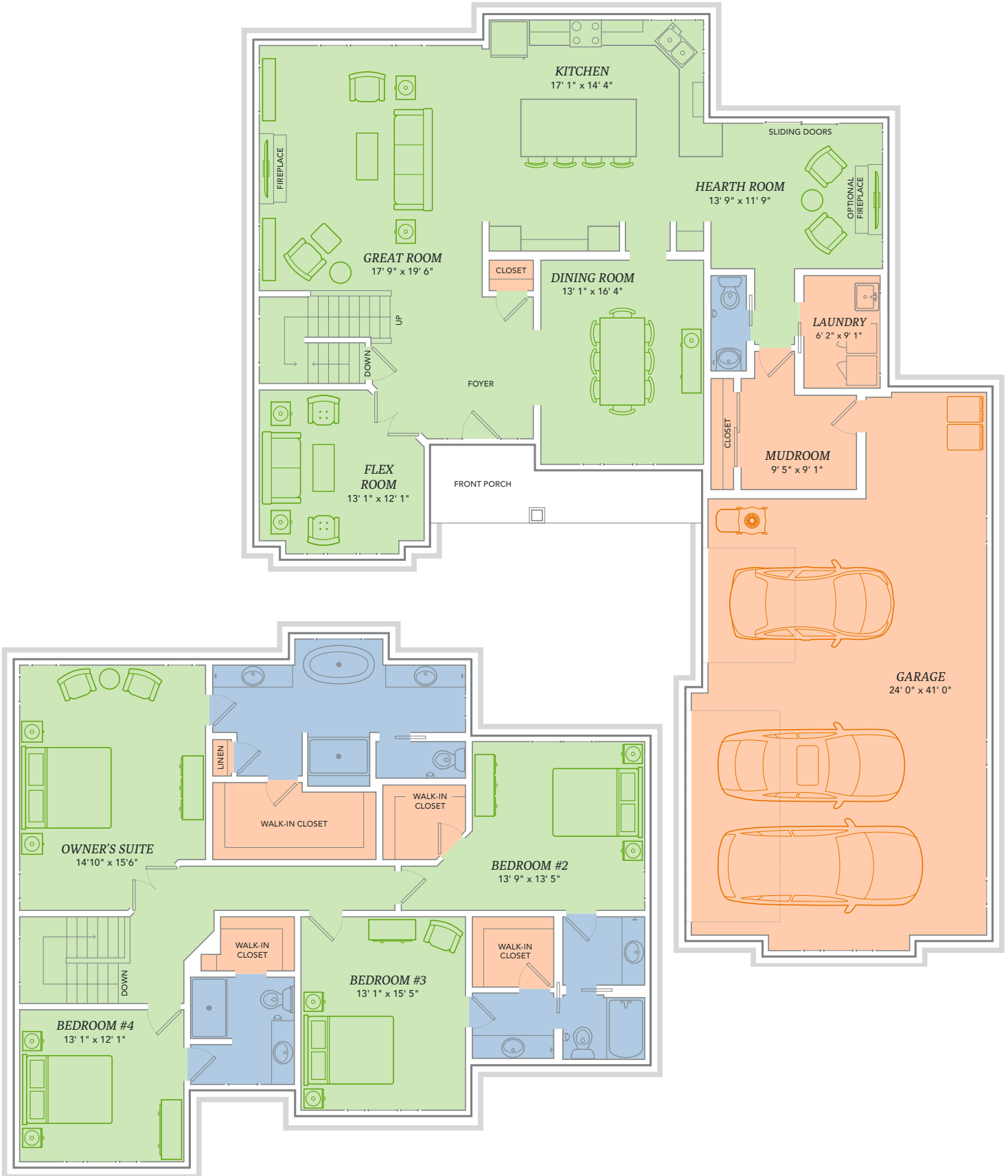


*Varies by elevation

WE MAKE BUILDING EASY.® When you build a Veridian home, you get much more than a home designed around you and your dreams. You get the peace of mind that comes with nationally-recognized, award-winning, quality craftsmanship and energy efficiency. You get a home that's constructed using innovative building materials as well as the newest technology and building practices. The result is a high-performing, green and energy efficient home that's a healthier home for you and your pocketbook. And when you build with Veridian Homes, you build with a team of specifically trained experts who make homebuilding easy.

Dream. Build. Live.

N60W21555 Legacy Trail, Menomonee Falls, WI 53051 | 262.252.3303 | VeridianHomes.com



A DREAM HOME FOR THE WHOLE FAMILY, the Becket was constructed with your loved ones in mind. This immense two-story floor plan features a beautiful hearth room, and a breathtaking owner's suite with both a walk-in shower and a Whirlpool tub. Best of all, no more fighting for closet space; each expansive bedroom includes an attached walk-in closet. Get lost in the vast elegance of the Becket.

Features

- Kitchen open to great room and hearth room
- Separate mudroom and laundry room, located off garage
- Flex room off foyer, for formal dining, office, etc.
- Spacious owner's suite with massive walk-in closet and private bath with freestanding tub
- Fireplace in great room
- Nine foot ceilings throughout first floor
- All bedrooms feature access to private bath and walk-in closets
- Zoned heating
- Custom Auburn Ridge® cabinetry
- Smart Home+ technology
- Energy expert certified
- Award-winning high-performance home

Options

- Cathedral, vault and tray ceiling options
- Custom built-ins
- Whirlpool and soaking tub options
- Personalized closet systems
- Additional green materials/products
- Personalize your home with thousands of options found within our Design Studio

Elevation



CERTIFIED HIGH-PERFORMING HOMES
BUILDING ENERGY EFFICIENT, GREEN HOMES SINCE 2001



- Energy Expert Certified
- Insulated Entry Door
- Pella® Low-E Insulated Windows
- Insulated Garage Door
- Electronic Set-Back Thermostats
- Energy Efficient LED Lighting
- Kohler® Low Flow Fixtures
- Energy Star® Bath Fans
- Energy Efficient Air Conditioner, Furnace and Water Heater
- Radon Mitigation System
- 2x6 Framed Walls, 24 on Center
- Tyvek® House Wrap
- Advanced Air Sealing
- Spray Foam Insulation
- Weather Max® Adhesive Membrane



\$296 IN SAVINGS EVERY MONTH!*

A LOOK INSIDE THE BECKET'S ENERGY EFFICIENCY. Lower index = higher efficiency. What does that mean to you? A HERS Index is the industry standard by which a home's energy efficiency is measured. It is also the nationally-recognized system for inspecting and calculating a home's energy performance. A Veridian home receives a rating 56 HERS or better, averaging 51 HERS, compared a typical old used home, which rates at 130 HERS – that's greater than a 70% increase in total energy performance. This means that your dream home will not only look like a dream, but it will run like one too.

*Estimated average monthly energy bill savings with the Becket. The costs were calculated using REM/Rate™ 12.97 and the HERS Score for the reference homes listed in the arrow chart and were published by RESNET, as compared to the typical used home. The typical used and new home scores were determined by the U.S. Department of Energy.

