

# THE MORRIS



3 BEDROOMS • 2.5 BATHROOMS • 1,638 SQUARE FEET\*



COTTAGE



CRAFTSMAN



PRAIRIE



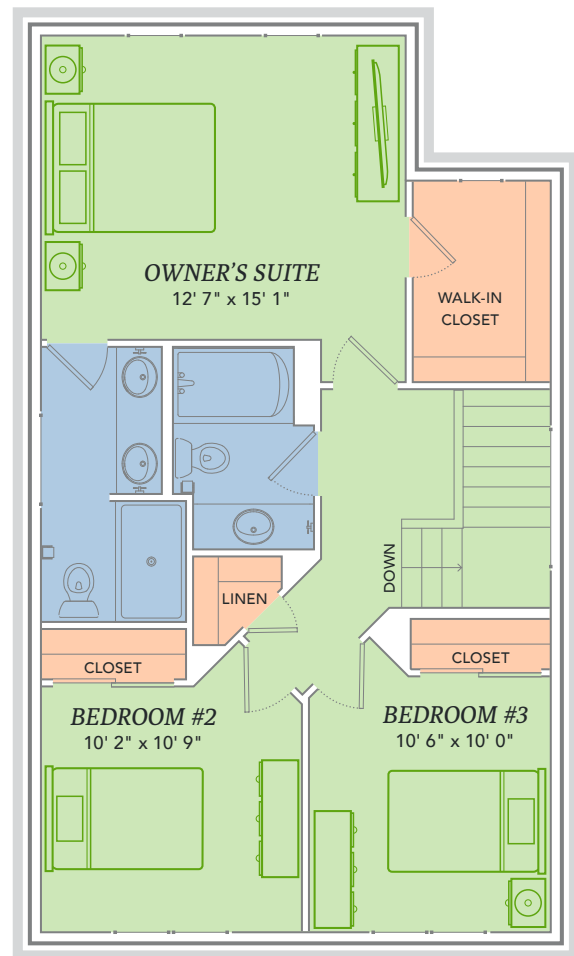
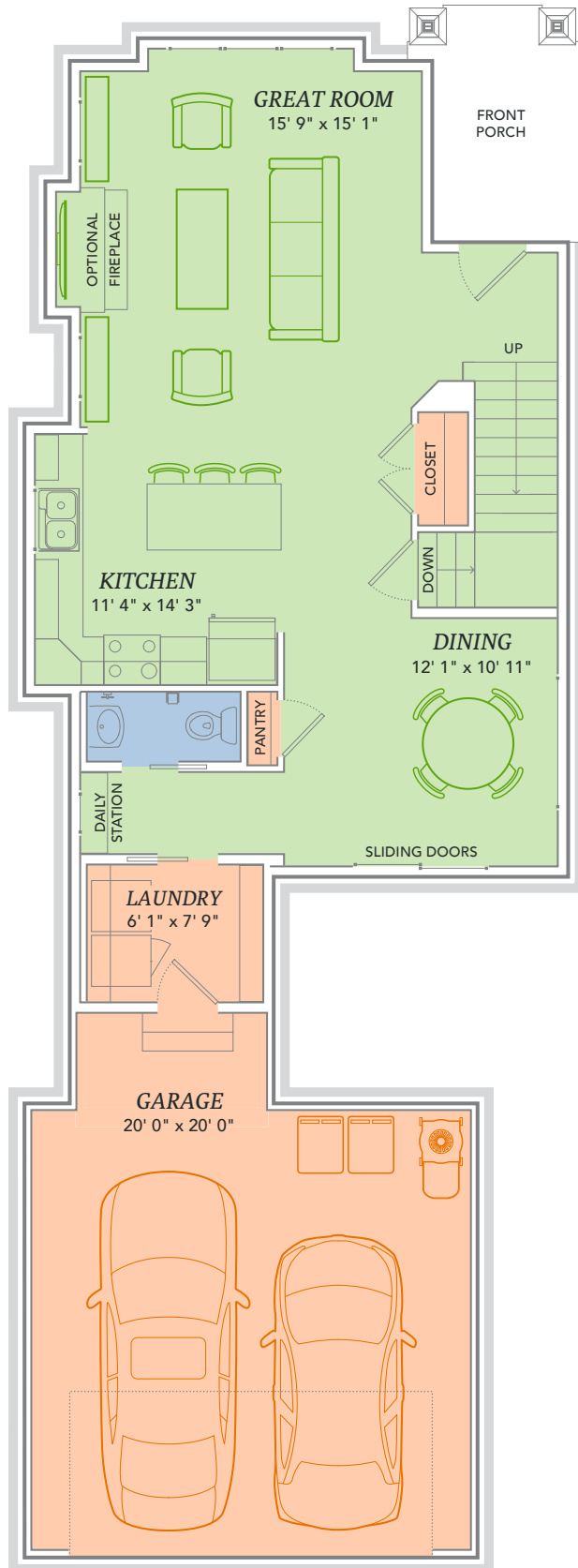
TRADITIONAL

\*Varies by elevation

**WE MAKE BUILDING EASY.®** When you build a Veridian home, you get much more than a home designed around you and your dreams. You get the peace of mind that comes with nationally-recognized, award-winning, quality craftsmanship and energy efficiency. You get a home that's constructed using innovative building materials as well as the newest technology and building practices. The result is a high-performing, green and energy efficient home that's a healthier home for you and your pocketbook. And when you build with Veridian Homes, you build with a team of specifically trained experts who make homebuilding easy.

*Dream. Build. Live.*

DESIGN STUDIO: 6801 South Towne Drive | PHONE: 1.800.726.7397 | WEB: [VeridianHomes.com](http://VeridianHomes.com)



**FUNCTIONAL AND FASHIONABLE.** The Morris provides modern day ease with its welcoming foyer and gorgeous great room that spans into the spacious kitchen. Throw in a load of laundry while you master your Mother's recipe, then retreat upstairs to your secluded and sophisticated owner's suite for the rest and relaxation you deserve. With an open, airy and convenient floor plan, you won't have to go far to feel the comforts of home. Or back to the kitchen for that extra slice of pie.

## Features

- Open plan carriage lane home
- Large kitchen island
- Open living, dining and kitchen areas
- Laundry located in mudroom just off the garage
- Powder room parallels the foyer
- Owner's suite with private bath and walk-in closet
- Full basement
- Custom Auburn Ridge® cabinetry
- Smart Home+ technology
- Energy expert certified
- Award-winning, high-performance home

## Options

- Nine foot ceilings
- Tile shower or soaking tub with whirlpool options in owner's suite
- Personalized closet systems
- Add additional square footage
- Finished lower level
- Additional green materials/products
- Personalize your home with thousands of options found within our Design Studio

**CERTIFIED HIGH-PERFORMING HOMES**  
BUILDING ENERGY EFFICIENT, GREEN HOMES SINCE 2001



\*Features from a similar model



\*Features from a similar model



\*Features from a similar model





- Insulated Entry Door
- Insulated Garage Door
- Electronic Set-Back Thermostats
- Pella® Low-E Insulated Windows
- Energy Efficient LED Lighting
- Kohler® Low Flow Fixtures
- Energy Star® Bath Fans
- Energy Efficient Air Conditioner, Furnace and Water Heater
- Radon Mitigation System
- 2x6 Framed Walls, 24 on Center
- Tyvek® House Wrap
- Advanced Air Sealing
- Spray Foam Insulation
- Weather Max® Adhesive Membrane
- Energy Expert Certified



**\$296 IN SAVINGS EVERY MONTH!\***

**A LOOK INSIDE THE MORRIS'S ENERGY EFFICIENCY.** Lower index = higher efficiency. What does that mean to you? A HERS Index is the industry standard by which a home's energy efficiency is measured. It is also the nationally-recognized system for inspecting and calculating a home's energy performance. A Veridian home receives a rating 56 HERS or better, averaging 51 HERS, compared a typical old used home, which rates at 130 HERS – that's greater than a 70% increase in total energy performance. This means that your dream home will not only look like a dream, but it will run like one too.

\*Estimated average monthly energy bill savings with the Morris. The costs were calculated using REM/Rate™ 12.97 and the HERS Score for the reference homes listed in the arrow chart and were published by RESNET, as compared to the typical used home. The typical used and new home scores were determined by the U.S. Department of Energy.

