

The Hudson



4 BEDROOMS • 2.5 BATHROOMS • 2,116 SQUARE FEET*



*varies by elevation

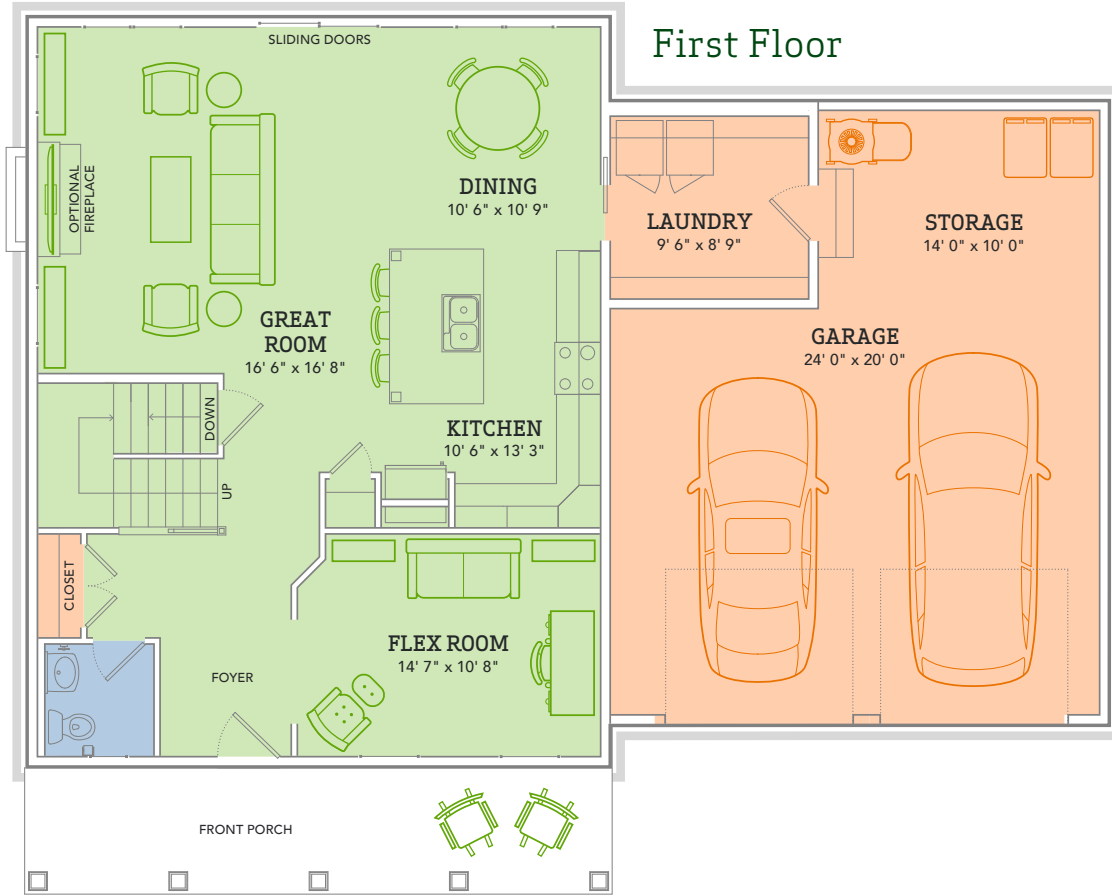


WE MAKE BUILDING EASY® When you build a Veridian home, you get much more than a home designed around you and your dreams. You get the peace of mind that comes with nationally-recognized, award-winning, quality craftsmanship and energy efficiency. You get a home that's constructed using innovative building materials as well as the newest technology and building practices. The result is a high-performing, green and energy efficient home that's a healthier home for you and your pocketbook. And when you build with Veridian Homes, you build with a team of specifically trained experts who make homebuilding easy.

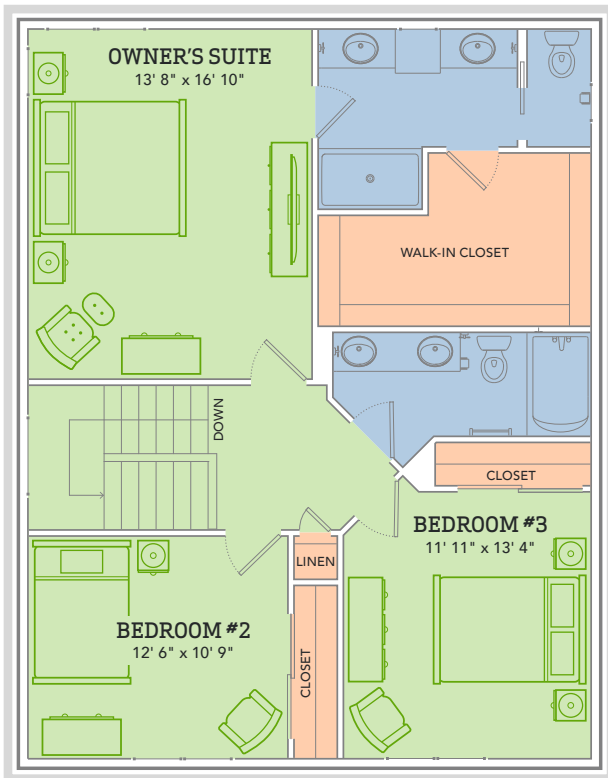
Dream. Build. Live.

DESIGN STUDIO: 6801 South Towne Drive | PHONE: 1.800.726.7397 | WEB: VeridianHomes.com

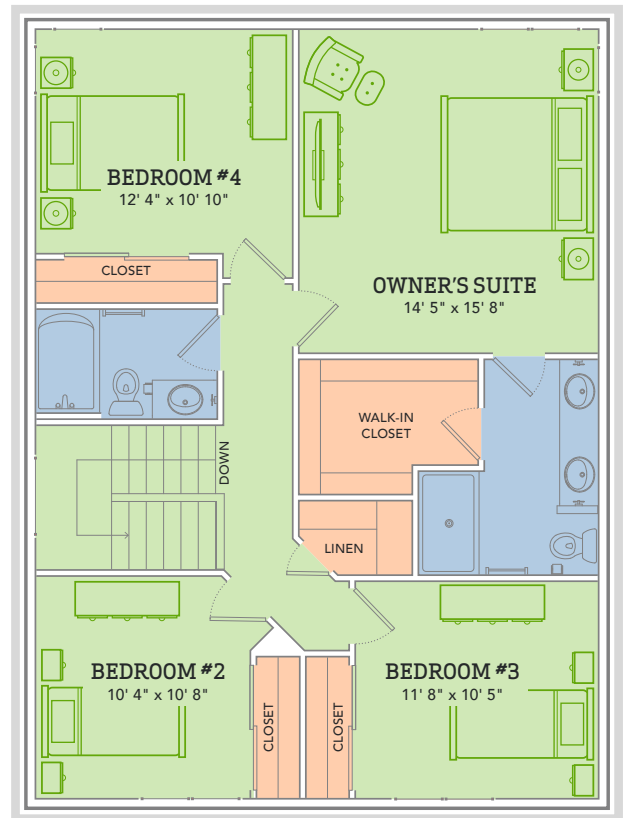
First Floor



Second Floor with 3 Bedrooms



Second Floor with 4 Bedrooms



The Hudson

THERE'S NO GETTING AROUND IT. The Hudson was made for life. And with life, comes stuff and things. But have no fear, The Hudson has all the storage you'll need to keep your stuff and things out of sight and guests impressed. Leaving you with more time to enjoy your company... and dessert.

Features

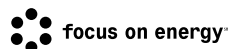
- Large, open floor plan
- Nine foot ceilings on first floor
- Kitchen island with breakfast bar and sink
- Flex room for home office, library, etc.
- Double bowl vanity in owner's bathroom
- Extra depth in garage for storage
- Large first floor laundry
- Full basement
- Custom Auburn Ridge® cabinetry
- Smart Home+ technology
- Energy expert certified
- Award-winning high-performance home

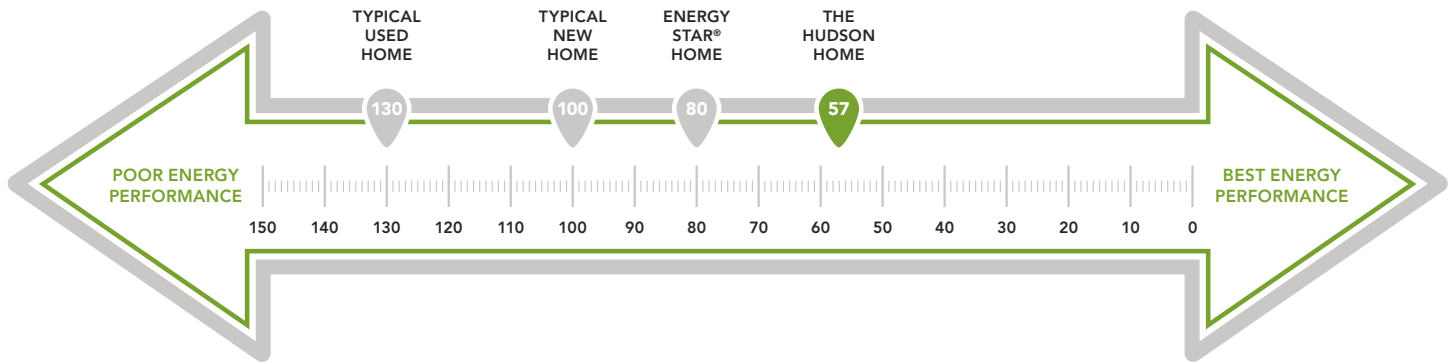
Options

- Built-in storage / window seat in the second floor hall
- Custom bookcases and/or entertainment center
- Tray ceiling in the owner's suite
- Tile shower or soaking tub in owner's bathroom
- Three car tandem garage with expanded laundry
- French doors or arched opening on flex room
- Loft area in place of bedroom #2
- Personalized closet systems
- Finished lower level
- Personalize your home with thousands of options found within our Design Studio



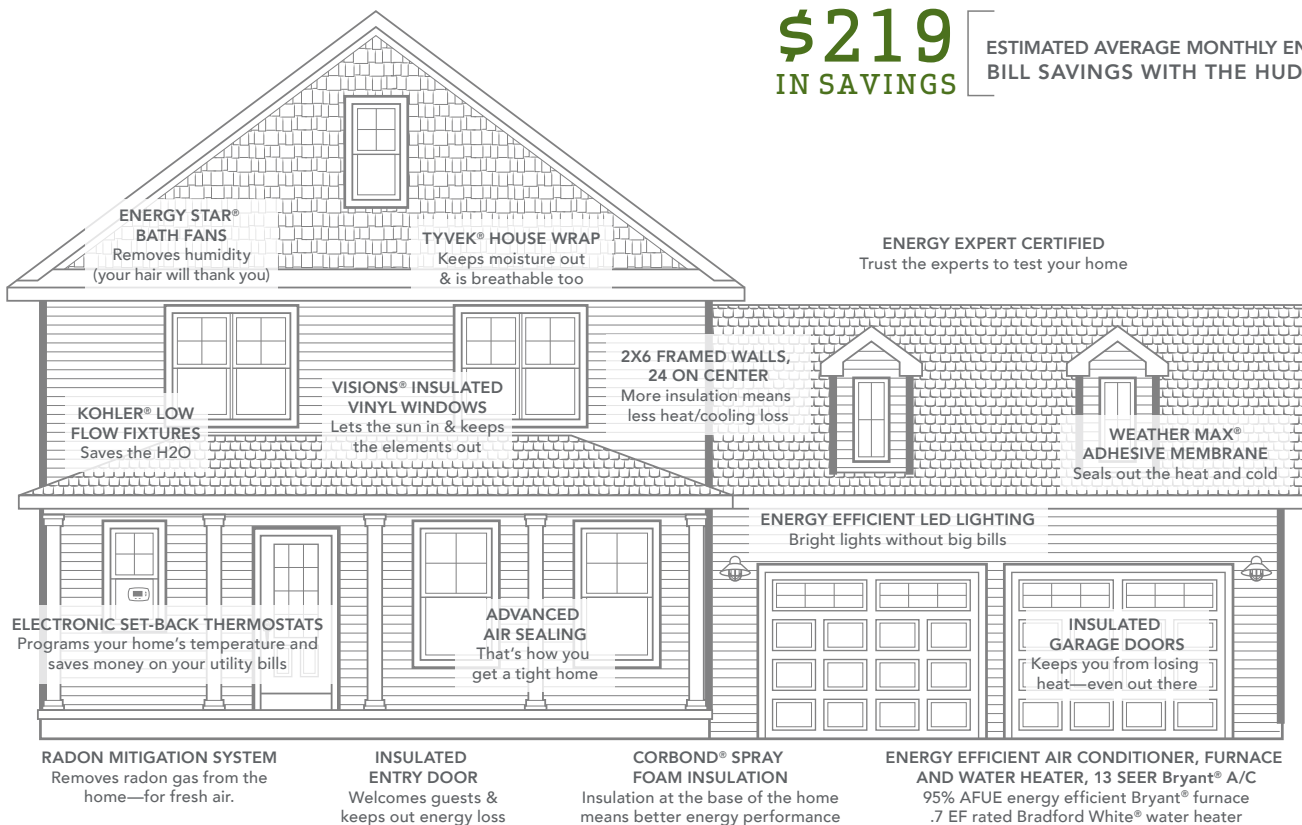
CERTIFIED HIGH-PERFORMING HOMES
BUILDING ENERGY EFFICIENT, GREEN HOMES SINCE 2001





\$219
IN SAVINGS

ESTIMATED AVERAGE MONTHLY ENERGY
BILL SAVINGS WITH THE HUDSON*



A LOOK INSIDE THE HUDSON'S ENERGY EFFICIENCY. Each point decrease in the HERS Index means a 1% reduction in energy consumption. Based on this, the Hudson is 73% more energy efficient than a typical used home. The HERS Index is a scoring system created by the Residential Energy Services Network (RESNET), and provides comparable energy efficiencies in various homes. Only a RESNET certified independent energy rater can determine a home's score. This energy scale is based on the U.S. Department of Energy's EnergySmart Home Scales. Actual energy savings may vary depending on a number of factors including the number of people living in the household, consumption habits, age/condition of electronics and appliances used, and lifestyle; and are not guaranteed.

*Estimated average monthly energy bill savings with the Hudson. The costs were calculated using REM/Rate™ 12.97 and the HERS Score for the reference homes listed in the arrow chart and were published by RESNET, as compared to the typical used home. The typical used and new home scores were determined by the U.S. Department of Energy.