

# THE TRIBECA



3 BEDROOMS · 2.5 BATHROOMS · 1,525 SQUARE FEET\*



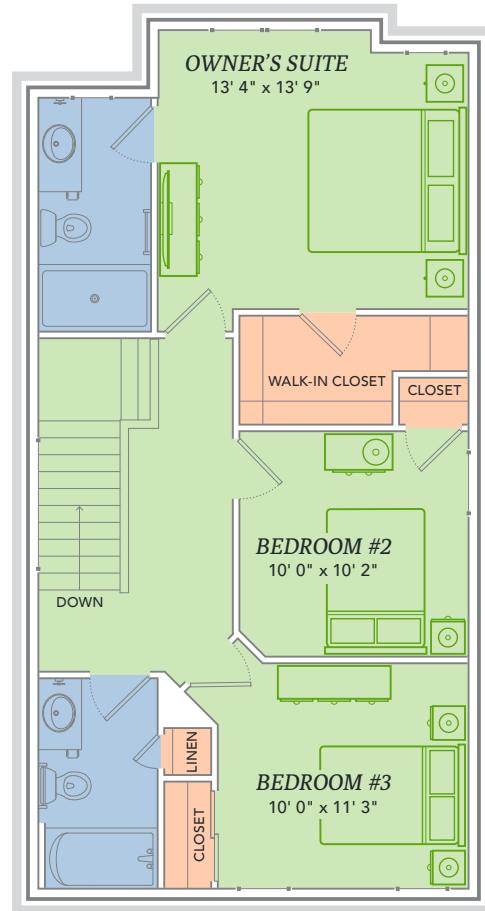
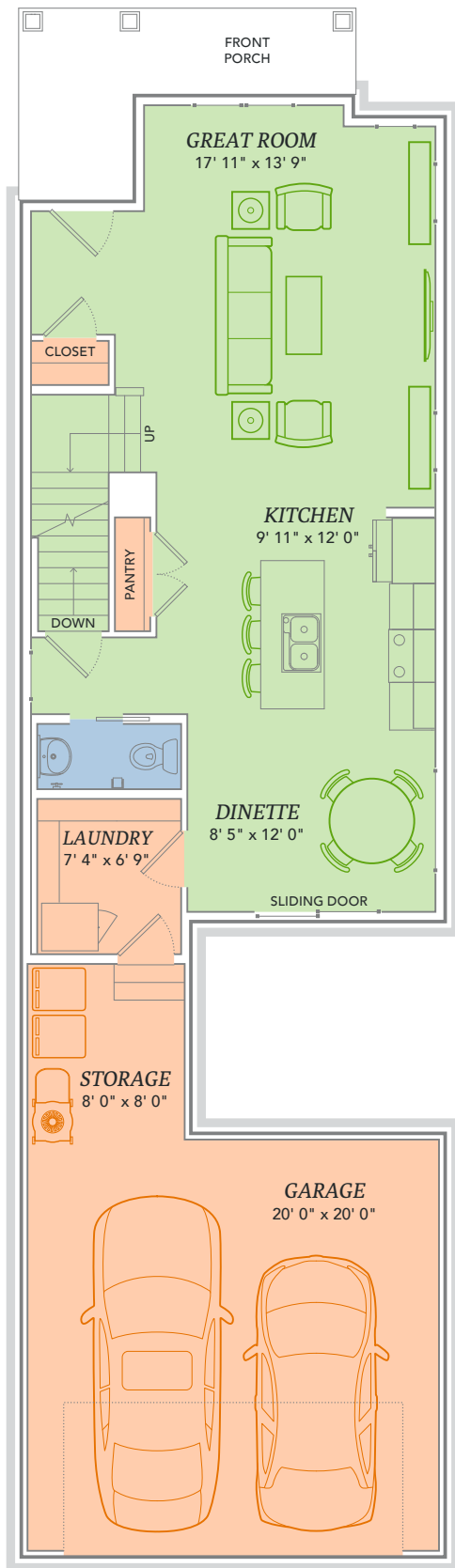
COTTAGE

\*Varies by elevation

**WE MAKE BUILDING EASY.®** When you build a Veridian home, you get much more than a home designed around you and your dreams. You get the peace of mind that comes with nationally-recognized, award-winning, quality craftsmanship and energy efficiency. You get a home that's constructed using innovative building materials as well as the newest technology and building practices. The result is a high-performing, green and energy efficient home that's a healthier home for you and your pocketbook. And when you build with Veridian Homes, you build with a team of specifically trained experts who make homebuilding easy.

*Dream. Build. Live.*

DESIGN STUDIO: 6801 South Towne Drive | PHONE: 1.800.726.7397 | WEB: VeridianHomes.com



**EGGS SUNNY SIDE UP**, at the sunniest breakfast nook around. Your breakfast nook. Yes, even the coffee tastes better while sipped slowly on the sofa that is anchoring your spacious great room. Why don't you head on upstairs and grab the coziest robe you can find from your walk-in closet and then enjoy a quick read of the newspaper while out on your front porch. Because this really is all yours. Enjoy life in the Tribeca.

## Features

- Open concept carriage home
- Owner's suite with private bathroom and walk-in closet
- First floor laundry/mudroom
- Convenient kitchen pantry
- Full basement
- Sliding door access to yard
- Spacious two car garage with added storage space
- Custom Auburn Ridge cabinetry
- Smart Home+ technology
- Energy expert certified
- Award-winning, high-performance home



National  
**Builder  
of the Year**



**CERTIFIED HIGH-PERFORMING HOMES**  
BUILDING ENERGY EFFICIENT, GREEN HOMES SINCE 2001

## Elevations





- Insulated Entry Door
- Insulated Garage Door
- Electronic Set-Back Thermostats
- Pella® Low-E Insulated Windows
- Energy Efficient LED Lighting
- Kohler® Low Flow Fixtures
- Energy Star® Bath Fans
- Energy Efficient Air Conditioner, Furnace and Water Heater
- Radon Mitigation System
- 2x6 Framed Walls, 24 on Center
- Tyvek® House Wrap
- Advanced Air Sealing
- Spray Foam Insulation
- Weather Max® Adhesive Membrane
- Energy Expert Certified



**\$296 IN SAVINGS EVERY MONTH!\***

**A LOOK INSIDE THE TRIBECA'S ENERGY EFFICIENCY.** Lower index = higher efficiency. What does that mean to you? A HERS Index is the industry standard by which a home's energy efficiency is measured. It is also the nationally-recognized system for inspecting and calculating a home's energy performance. A Veridian home receives a rating 56 HERS or better, averaging 51 HERS, compared a typical old used home, which rates at 130 HERS – that's greater than a 70% increase in total energy performance. This means that your dream home will not only look like a dream, but it will run like one too.

\*Estimated average monthly energy bill savings with the Tribeca. The costs were calculated using REM/Rate™ 12.97 and the HERS Score for the reference homes listed in the arrow chart and were published by RESNET, as compared to the typical used home. The typical used and new home scores were determined by the U.S. Department of Energy.

