

# The Hoffman



4 BEDROOMS · 2.5 BATHROOMS · 2,045 SQUARE FEET\*



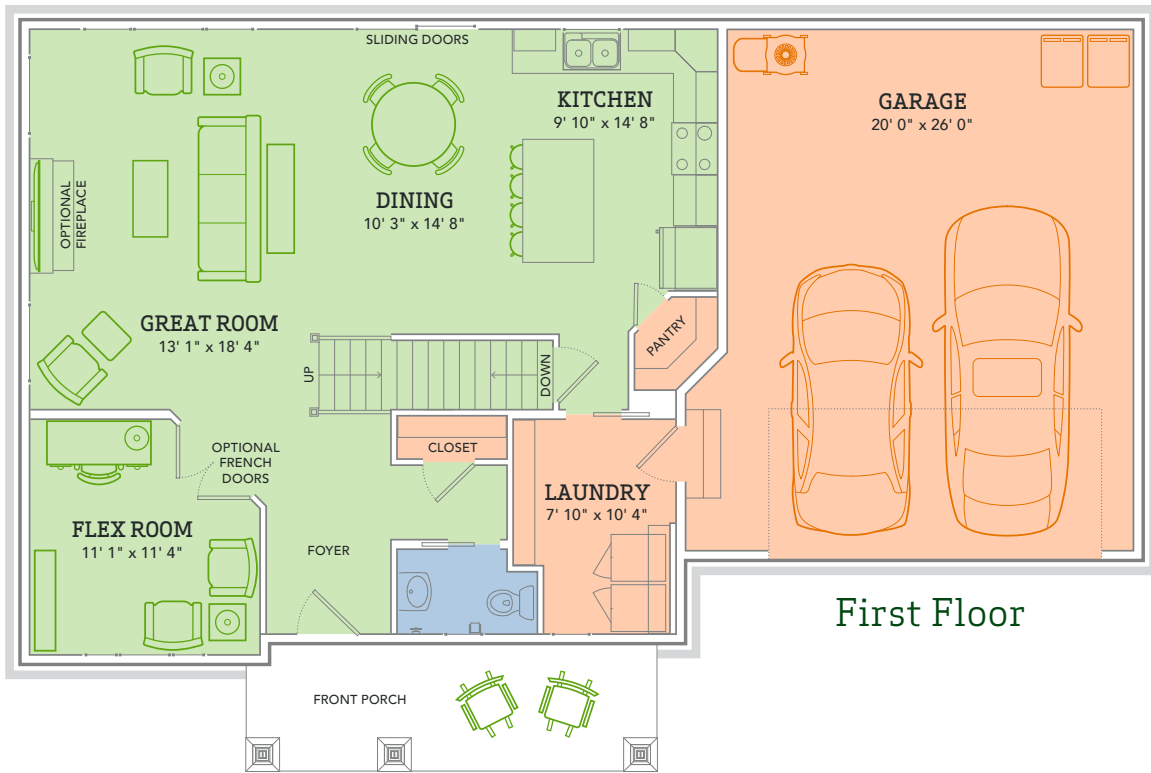
\*varies by elevation



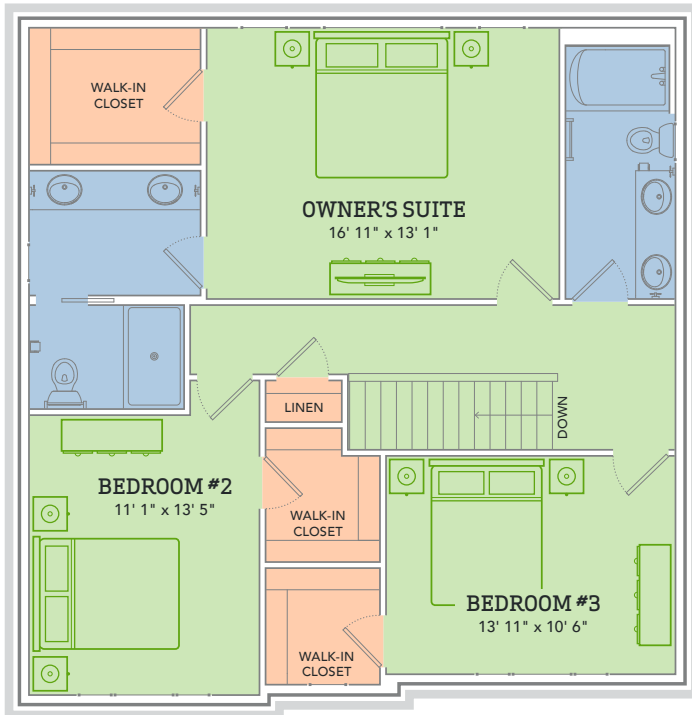
**WE MAKE BUILDING EASY®** When you build a Veridian home, you get much more than a home designed around you and your dreams. You get the peace of mind that comes with nationally-recognized, award-winning, quality craftsmanship and energy efficiency. You get a home that's constructed using innovative building materials as well as the newest technology and building practices. The result is a high-performing, green and energy efficient home that's a healthier home for you and your pocketbook. And when you build with Veridian Homes, you build with a team of specifically trained experts who make homebuilding easy.

*Dream. Build. Live.*

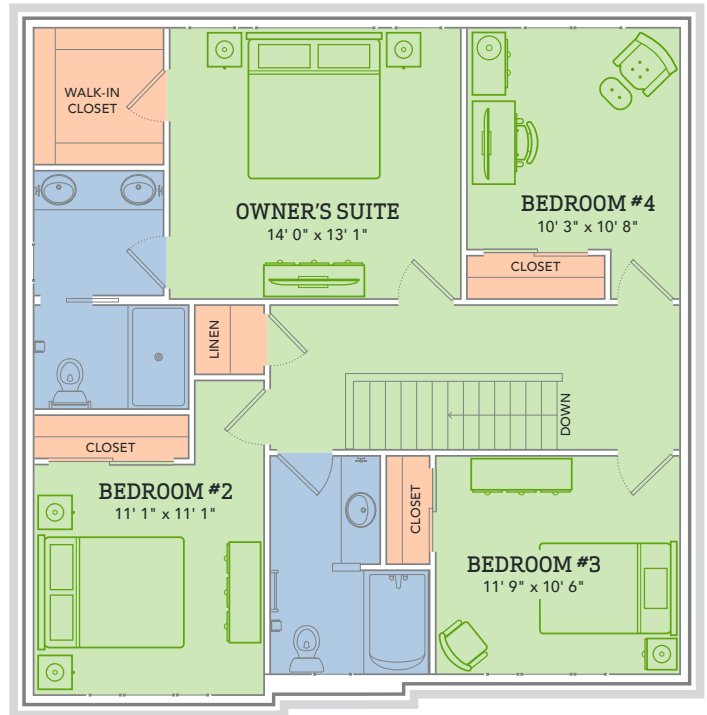
DESIGN STUDIO: 6801 South Towne Drive | PHONE: 1.800.726.7397 | WEB: VeridianHomes.com



Second Floor with 3 Bedrooms



Second Floor with 4 Bedrooms



## The Hoffman

**CALLING ALL COOKS, BOOKLOVERS AND DECORATORS!** Go ahead, line the shelves with those classic Mark Twain novels or one-of-a-kind treasures. Load up that roomy kitchen with gourmet pans and obscure gadgets. With more space, means more luxury. Meet The Hoffman.

## Features

- Open floor plan
- Kitchen island with breakfast bar
- Flex room for formal dining, office, etc.
- Spacious first floor laundry/mudroom
- Owner's suite bathroom features dual vanities and water closet
- Large walk-in closet off owner's bathroom
- Extra storage room in garage
- Custom Auburn Ridge® cabinetry
- Smart Home+ technology
- Energy expert certified
- Award-winning high-performance home

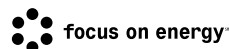
## Options

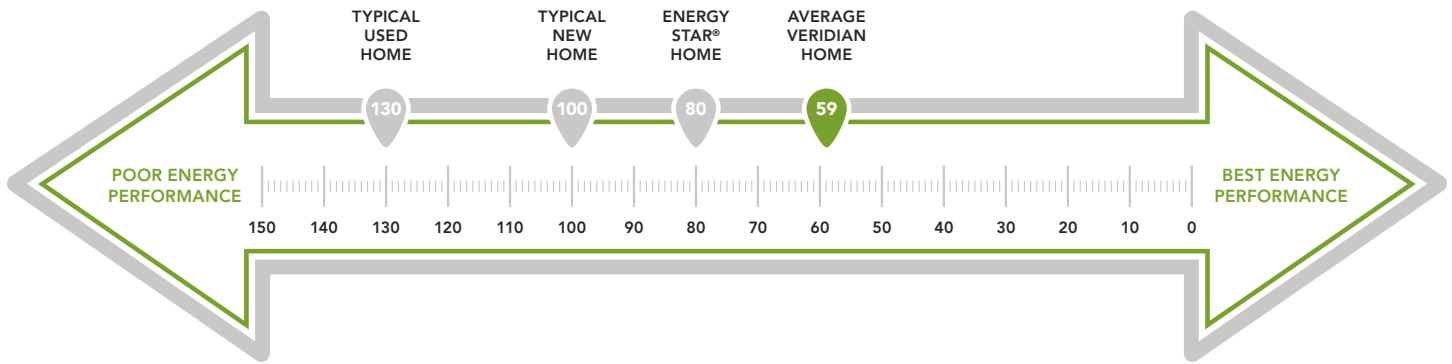
- Nine foot and tray ceiling options
- Finished lower level
- Fireplace in great room
- Bump-out in dining area
- Personalized closet systems
- Custom built-ins
- Tile shower or soaking tub in bathroom off of owner's suite
- Additional green materials/products
- Personalize your home with thousands of options found within our Design Studio



\*features from a similar model

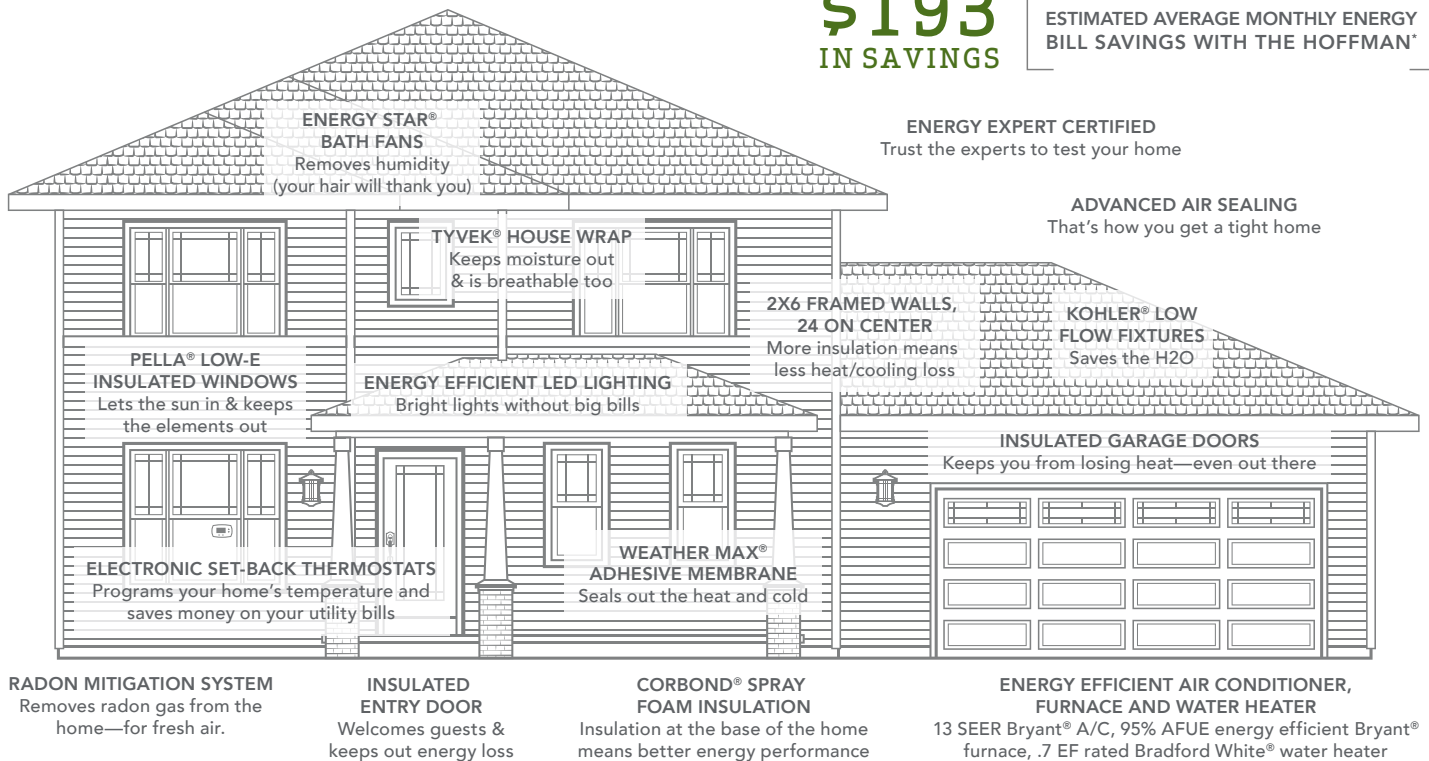
**CERTIFIED HIGH-PERFORMING HOMES**  
BUILDING ENERGY EFFICIENT, GREEN HOMES SINCE 2001





**\$193**  
IN SAVINGS

ESTIMATED AVERAGE MONTHLY ENERGY BILL SAVINGS WITH THE HOFFMAN\*



**A LOOK INSIDE THE HOFFMAN'S ENERGY EFFICIENCY.** Each point decrease in the HERS Index means a 1% reduction in energy consumption. Based on this, the Hoffman is 71% more energy efficient than a typical used home. The HERS Index is a scoring system created by the Residential Energy Services Network (RESNET), and provides comparable energy efficiencies in various homes. Only a RESNET certified independent energy rater can determine a home's score. This energy scale is based on the U.S. Department of Energy's EnergySmart Home Scales. Actual energy savings may vary depending on a number of factors including the number of people living in the household, consumption habits, age/condition of electronics and appliances used, and lifestyle; and are not guaranteed.

\*Estimated average monthly energy bill savings with the Hoffman. The costs were calculated using REM/Rate™ 12.97 and the HERS Score for the reference homes listed in the arrow chart and were published by RESNET, as compared to the typical used home. The typical used and new home scores were determined by the U.S. Department of Energy.