

The Beryl



3 BEDROOMS • 2.5 BATHROOMS • 1,503 SQUARE FEET*



SHINGLE



CALIFORNIA BUNGALOW



COTTAGE VICTORIAN



CRAFTSMAN COTTAGE

*varies by elevation

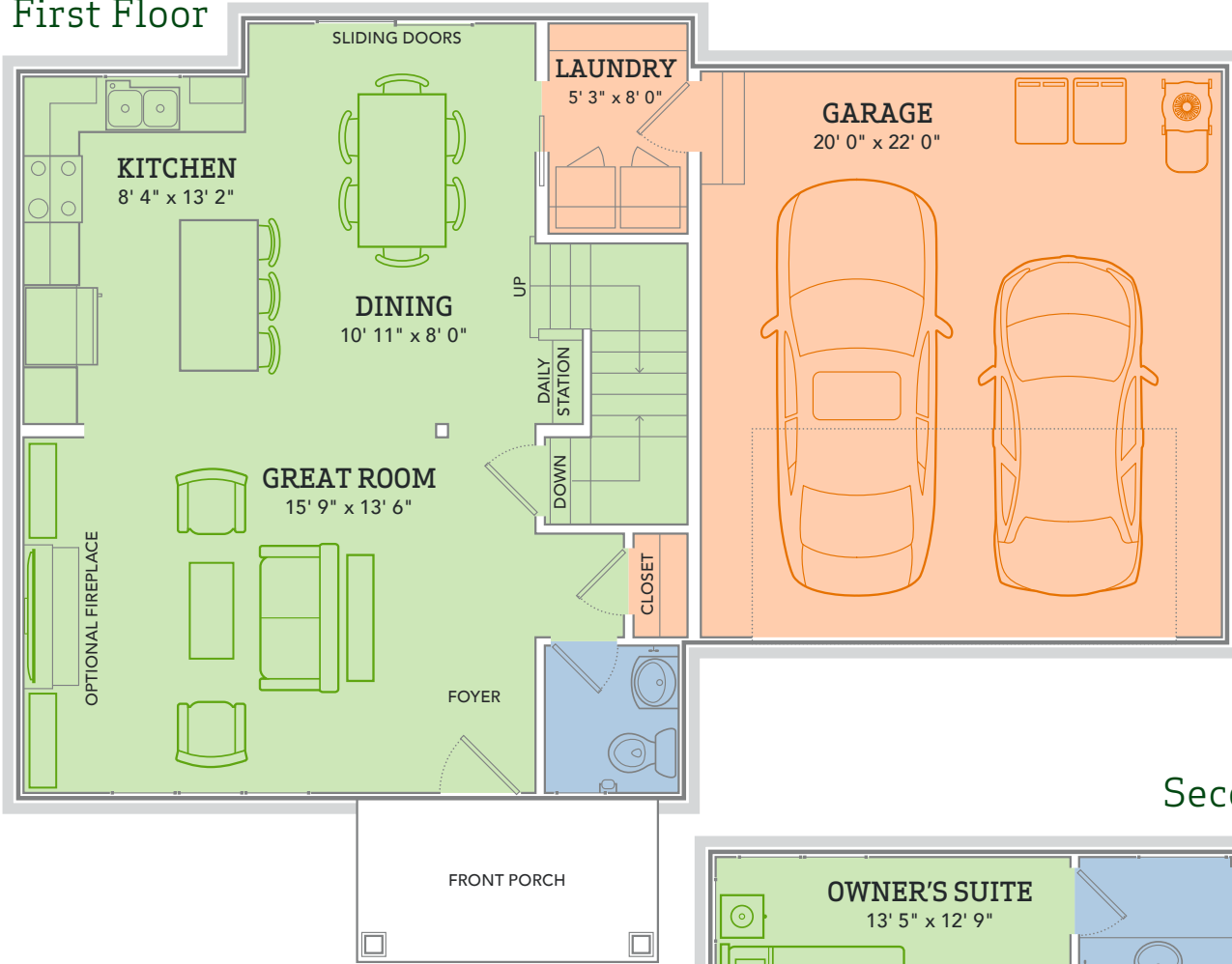


WE MAKE BUILDING EASY® When you build a Veridian home, you get much more than a home designed around you and your dreams. You get the peace of mind that comes with nationally-recognized, award-winning, quality craftsmanship and energy efficiency. You get a home that's constructed using innovative building materials as well as the newest technology and building practices. The result is a high-performing, green and energy efficient home that's a healthier home for you and your pocketbook. And when you build with Veridian Homes, you build with a team of specifically trained experts who make homebuilding easy.

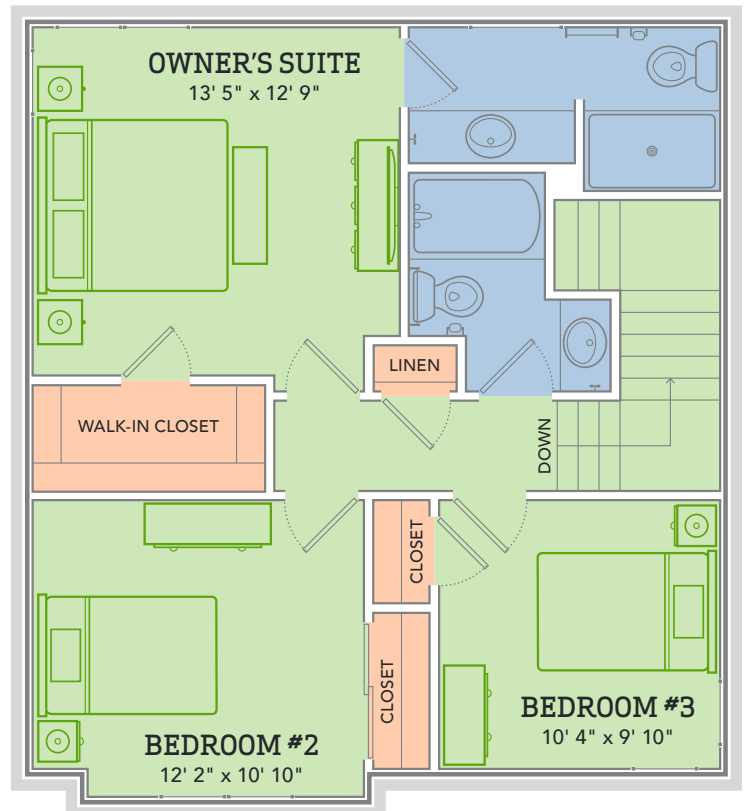
Dream. Build. Live.

DESIGN STUDIO: 6801 South Towne Drive | PHONE: 1.800.726.7397 | WEB: VeridianHomes.com

First Floor



Second Floor



The Beryl

THE BERYL, GREAT FOR ENTERTAINING, EVEN BETTER FOR LIVING. Laughter will flow freely throughout its open floor plan, hors d'oeuvres will fly quickly off the kitchen island and mingling will commence within the great room.

Features

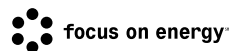
- Open floor plan
- First floor laundry
- Large Daily Station
- Custom Auburn Ridge® cabinetry
- Seventy-two inch owner's vanity
- Full basement
- Smart Home+ technology
- Energy expert certified
- Award-winning high-performance home

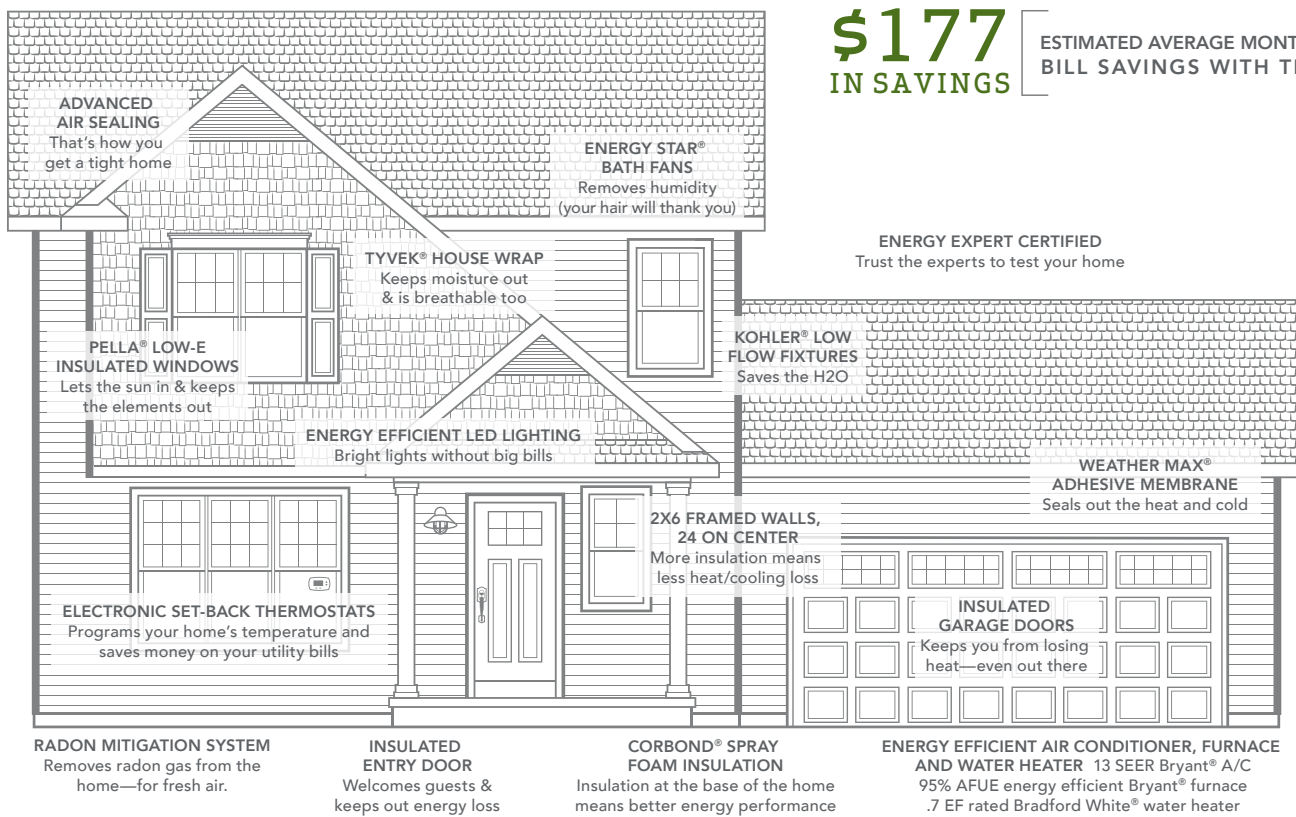
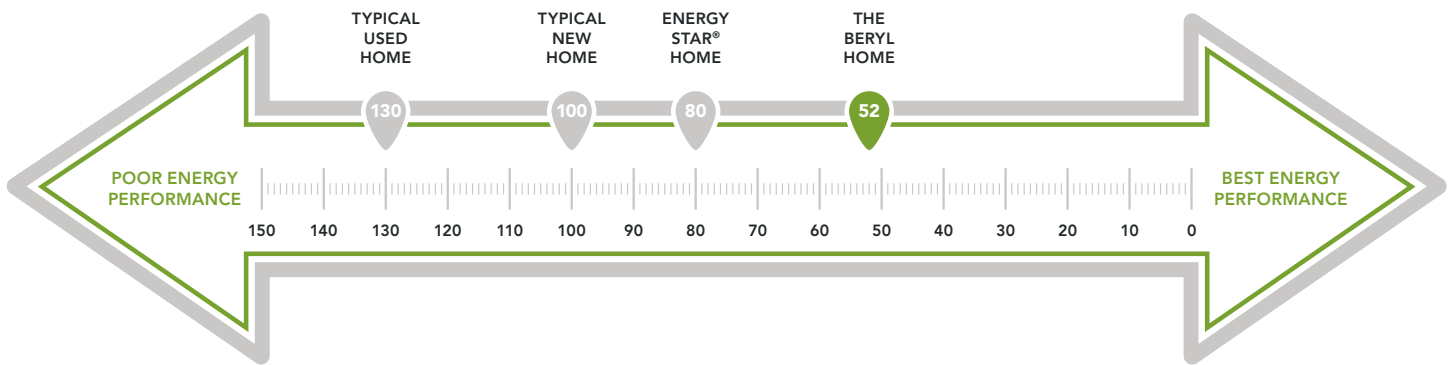
Options

- Nine foot ceilings with winder stairs
- Tray or vaulted ceilings in owner's suite
- Extra depth for extra storage space in garage
- Finished lower level
- Add additional square footage
- Whirlpool options
- Custom bookcases and/or entertainment center
- Personalized closet systems
- Additional green materials/products
- Personalize your home with thousands of options found within our Design Studio



CERTIFIED HIGH-PERFORMING HOMES
BUILDING ENERGY EFFICIENT, GREEN HOMES SINCE 2001





\$177
IN SAVINGS

ESTIMATED AVERAGE MONTHLY ENERGY BILL SAVINGS WITH THE BERYL*

A LOOK INSIDE THE BERYL'S ENERGY EFFICIENCY. Each point decrease in the HERS Index means a 1% reduction in energy consumption. Based on this, the Beryl is 71% more energy efficient than a typical used home. The HERS Index is a scoring system created by the Residential Energy Services Network (RESNET), and provides comparable energy efficiencies in various homes. Only a RESNET certified independent energy rater can determine a home's score. This energy scale is based on the U.S. Department of Energy's EnergySmart Home Scales. Actual energy savings may vary depending on a number of factors including the number of people living in the household, consumption habits, age/condition of electronics and appliances used, and lifestyle; and are not guaranteed.

*Estimated average monthly energy bill savings with the Beryl. The costs were calculated using REM/Rate™ 12.97 and the HERS Score for the reference homes listed in the arrow chart and were published by RESNET, as compared to the typical used home. The typical used and new home scores were determined by the U.S. Department of Energy.