

THE JACKSON



4 BEDROOMS · 2.5 BATHROOMS · 2,781 SQUARE FEET*



FARMHOUSE



COTTAGE



CRAFTSMAN



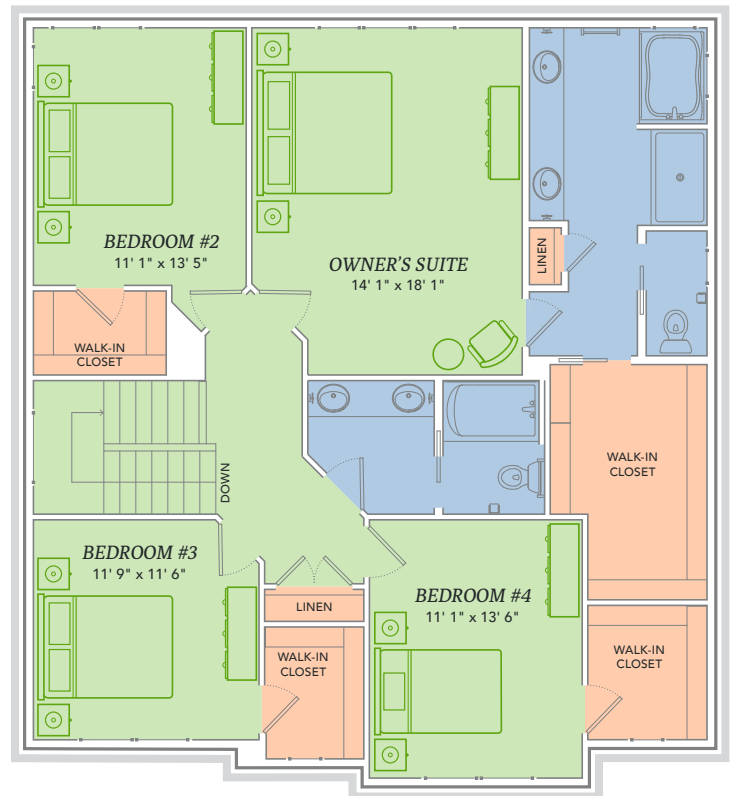
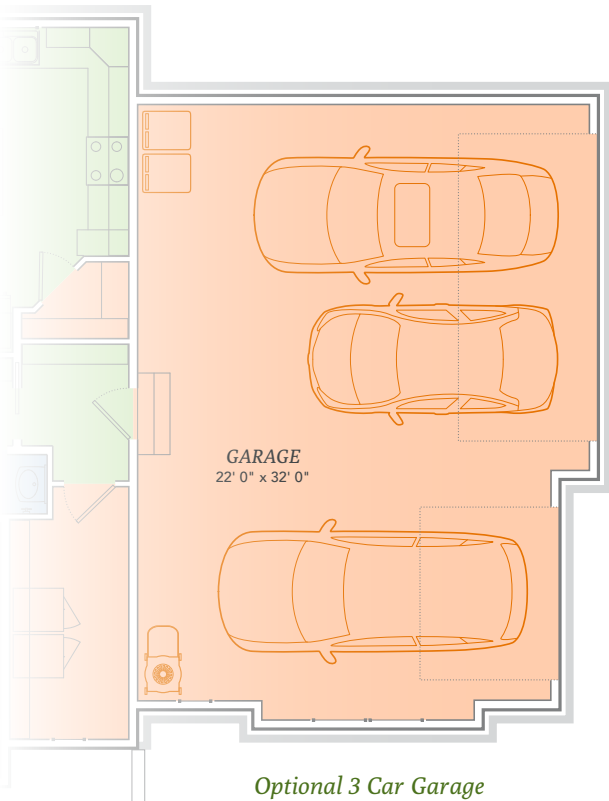
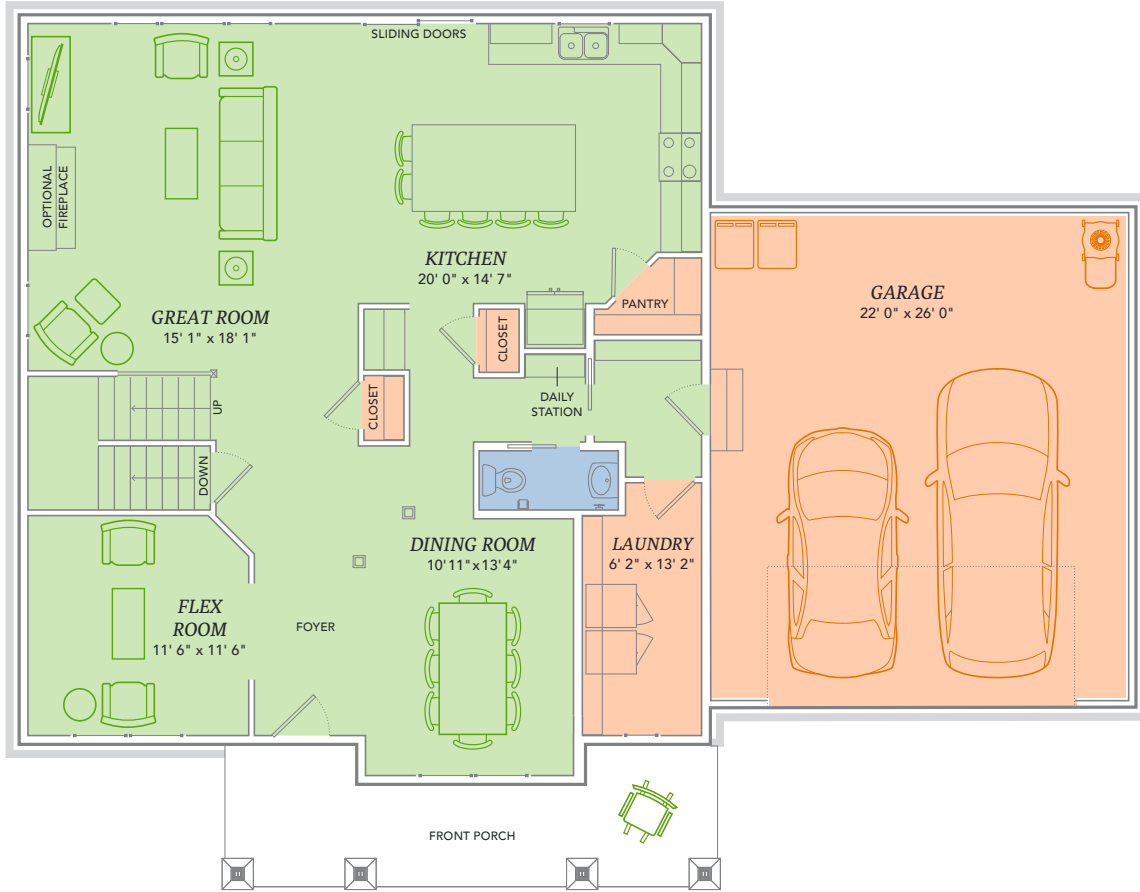
PRAIRIE

*Varies by elevation

WE MAKE BUILDING EASY.® When you build a Veridian home, you get much more than a home designed around you and your dreams. You get the peace of mind that comes with nationally-recognized, award-winning, quality craftsmanship and energy efficiency. You get a home that's constructed using innovative building materials as well as the newest technology and building practices. The result is a high-performing, green and energy efficient home that's a healthier home for you and your pocketbook. And when you build with Veridian Homes, you build with a team of specifically trained experts who make homebuilding easy.

Dream. Build. Live.

DESIGN STUDIO: 6801 South Towne Drive | PHONE: 1.800.726.7397 | WEB: VeridianHomes.com



WITH ITS DRAMATIC TWO-STORY FOYER, THERE'S NO DENYING IT. THE JACKSON MAKES A STATEMENT. Actually, it makes several. Its four bedrooms say there's plenty of room for everyone. Its spacious owner's suite acknowledges that there is time for peace and privacy. Its loft makes a case for unique imagination space. Its big basement understands that sometimes, kids just need to roughhouse with each other. And the Jackson's biggest statement? It says "welcome home."

Features

- Open family living areas with formal dining room and breakfast area off the kitchen
- Flex room for office, library, playroom, etc.
- Large kitchen island with breakfast bar
- Soaking tub and shower in owner's bathroom
- Nine foot ceilings on the first floor with open foyer
- Lofted space for added room
- Expanded first floor laundry
- Custom Auburn Ridge® cabinetry
- Smart Home+ technology
- Energy expert certified
- Award-winning, high-performance home



Options

- Fifth bedroom
- Tray ceiling options
- French doors / arched opening on flex room
- Custom built-in bookcases, entertainment center, window seat and/or desk
- Butler's pantry and/or wine bar
- Three or four car tandem garage
- Personalized closet systems
- Additional green materials/products
- Personalize your home with thousands of options found within our Design Studio



CERTIFIED HIGH-PERFORMING HOMES
BUILDING ENERGY EFFICIENT, GREEN HOMES SINCE 2001





- Energy Expert Certified
- Insulated Entry Door
- Pella® Low-E Insulated Windows
- Insulated Garage Door
- Electronic Set-Back Thermostats
- Energy Efficient LED Lighting
- Kohler® Low Flow Fixtures
- Energy Star® Bath Fans
- Energy Efficient Air Conditioner, Furnace and Water Heater
- Radon Mitigation System
- 2x6 Framed Walls, 24 on Center
- Tyvek® House Wrap
- Advanced Air Sealing
- Spray Foam Insulation
- Weather Max® Adhesive Membrane



\$296 IN SAVINGS EVERY MONTH!*

A LOOK INSIDE THE JACKSON'S ENERGY EFFICIENCY. Lower index = higher efficiency. What does that mean to you? A HERS Index is the industry standard by which a home's energy efficiency is measured. It is also the nationally-recognized system for inspecting and calculating a home's energy performance. A Veridian home receives a rating 56 HERS or better, averaging 51 HERS, compared a typical old used home, which rates at 130 HERS – that's greater than a 70% increase in total energy performance. This means that your dream home will not only look like a dream, but it will run like one too.

*Estimated average monthly energy bill savings with the Jackson. The costs were calculated using REM/Rate™ 12.97 and the HERS Score for the reference homes listed in the arrow chart and were published by RESNET, as compared to the typical used home. The typical used and new home scores were determined by the U.S. Department of Energy.

