

# THE MERCER



4 BEDROOMS · 2.5 BATHROOMS · 1,898 SQUARE FEET\*

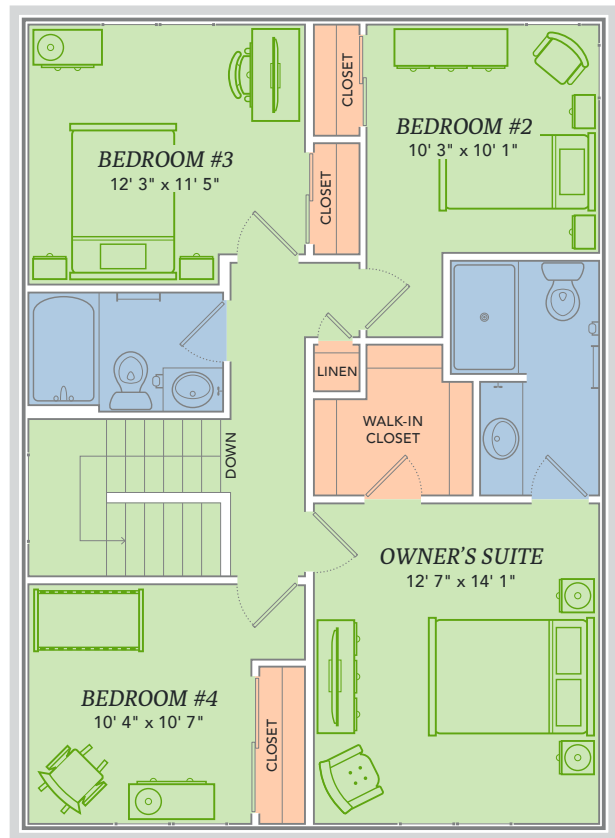
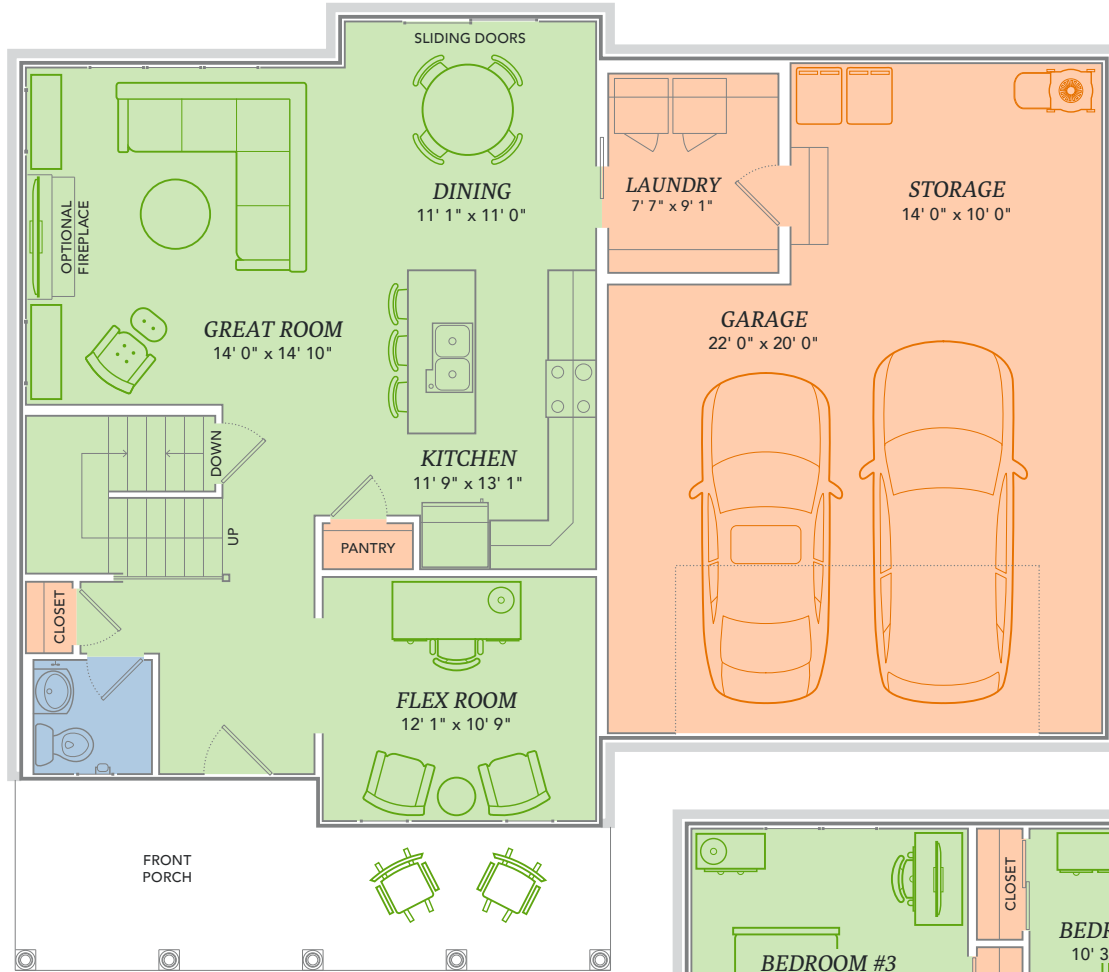


\*Varies by elevation

**WE MAKE BUILDING EASY.®** When you build a Veridian home, you get much more than a home designed around you and your dreams. You get the peace of mind that comes with nationally-recognized, award-winning, quality craftsmanship and energy efficiency. You get a home that's constructed using innovative building materials as well as the newest technology and building practices. The result is a high-performing, green and energy efficient home that's a healthier home for you and your pocketbook. And when you build with Veridian Homes, you build with a team of specifically trained experts who make homebuilding easy.

*Dream. Build. Live.*

DESIGN STUDIO: 6801 South Towne Drive | PHONE: 1.800.726.7397 | WEB: VeridianHomes.com



Actual floor plans and elevations may differ from those shown based on modifications, options and improvements to the plans by the builder.

WAKING UP IN THE MERCER IS PRETTY MUCH LIKE WAKING UP IN A DREAM. This lovely home's two-story plan allows for optimal space when little feet are running around upstairs, and you are in the kitchen cooking your famous chicken cacciatore. With more space means more room to express yourself—and we think you're pretty great, so why wouldn't you?

*Features*

- Kitchen open to living and dining areas
- Spacious kitchen island
- Flex room for formal dining, office, etc.
- Custom Auburn Ridge® cabinetry
- Owner's suite with walk-in closet and private bath
- Laundry/mudroom with built-in Daily Station
- Smart Home+ technology
- Energy expert certified
- Award-winning, high-performance home

*Options*

- Tray ceiling options
- Custom built-ins
- Personalized closet systems
- Whirlpool and soaking tub options
- Additional green materials/products
- Personalize your home with thousands of options found within our Design Studio



\*Features from a similar model



\*Features from a similar model



\*Features from a similar model



**CERTIFIED HIGH-PERFORMING HOMES**  
BUILDING ENERGY EFFICIENT, GREEN HOMES SINCE 2001



- Energy Expert Certified
- Insulated Entry Door
- Pella® Low-E Insulated Windows
- Insulated Garage Door
- Electronic Set-Back Thermostats
- Energy Efficient LED Lighting
- Kohler® Low Flow Fixtures
- Energy Star® Bath Fans
- Energy Efficient Air Conditioner, Furnace and Water Heater
- Radon Mitigation System
- 2x6 Framed Walls, 24 on Center
- Tyvek® House Wrap
- Advanced Air Sealing
- Spray Foam Insulation
- Weather Max® Adhesive Membrane



**\$296 IN SAVINGS EVERY MONTH!\***

**A LOOK INSIDE THE MERCER'S ENERGY EFFICIENCY.** Lower index = higher efficiency. What does that mean to you? A HERS Index is the industry standard by which a home's energy efficiency is measured. It is also the nationally-recognized system for inspecting and calculating a home's energy performance. A Veridian home receives a rating 56 HERS or better, averaging 51 HERS, compared a typical old used home, which rates at 130 HERS – that's greater than a 70% increase in total energy performance. This means that your dream home will not only look like a dream, but it will run like one too.

\*Estimated average monthly energy bill savings with the Mercer. The costs were calculated using REM/Rate™ 12.97 and the HERS Score for the reference homes listed in the arrow chart and were published by RESNET, as compared to the typical used home. The typical used and new home scores were determined by the U.S. Department of Energy.

