

# THE ADLER



3 BEDROOMS • 3 BATHROOMS • 2,047 SQUARE FEET\*

ADLER I - BRICK



ADLER I - STONE

ADLER II - BRICK

ADLER II - STONE

ADLER III - BRICK

ADLER III - STONE



\*Varies by elevation

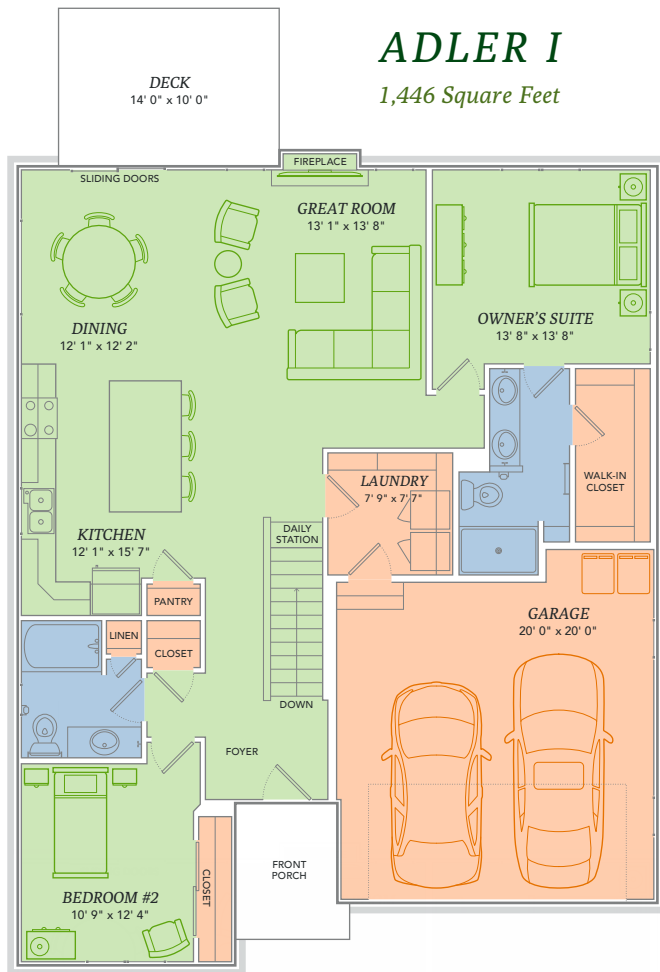
**WE MAKE BUILDING EASY.®** When you build a Veridian home, you get much more than a home designed around you and your dreams. You get the peace of mind that comes with nationally-recognized, award-winning, quality craftsmanship and energy efficiency. You get a home that's constructed using innovative building materials as well as the newest technology and building practices. The result is a high-performing, green and energy efficient home that's a healthier home for you and your pocketbook. And when you build with Veridian Homes, you build with a team of specifically trained experts who make homebuilding easy.

*Dream. Build. Live.*

DESIGN STUDIO: 6801 South Towne Drive | PHONE: 1.800.726.7397 | WEB: [VeridianHomes.com](http://VeridianHomes.com)

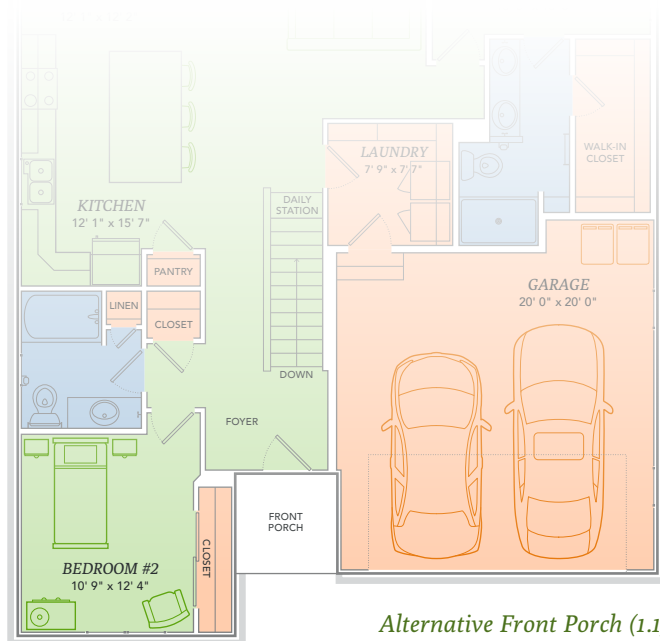
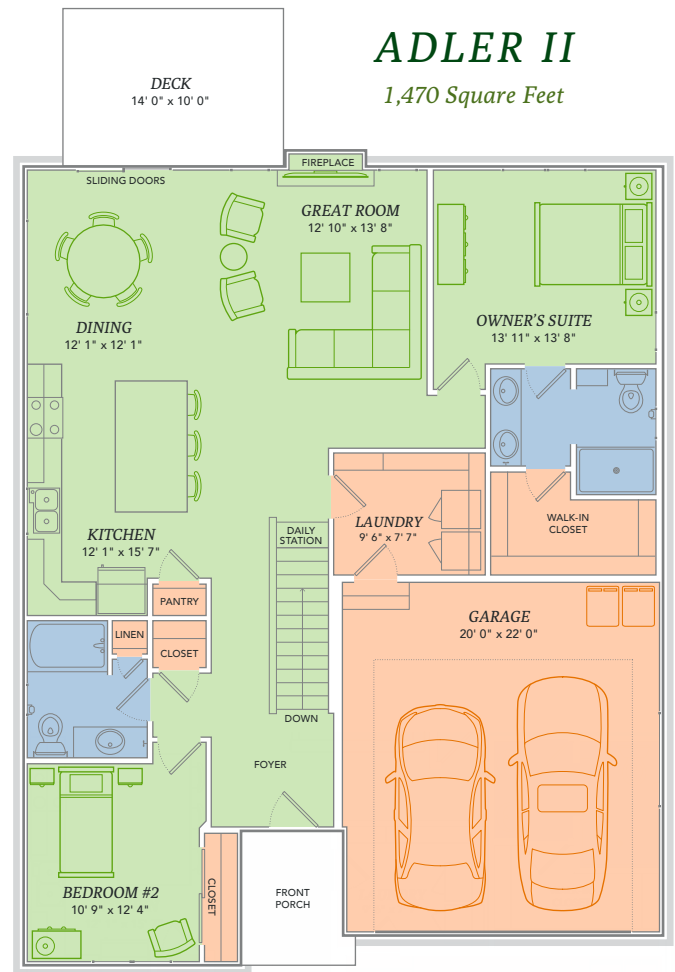
## ADLER I

1,446 Square Feet

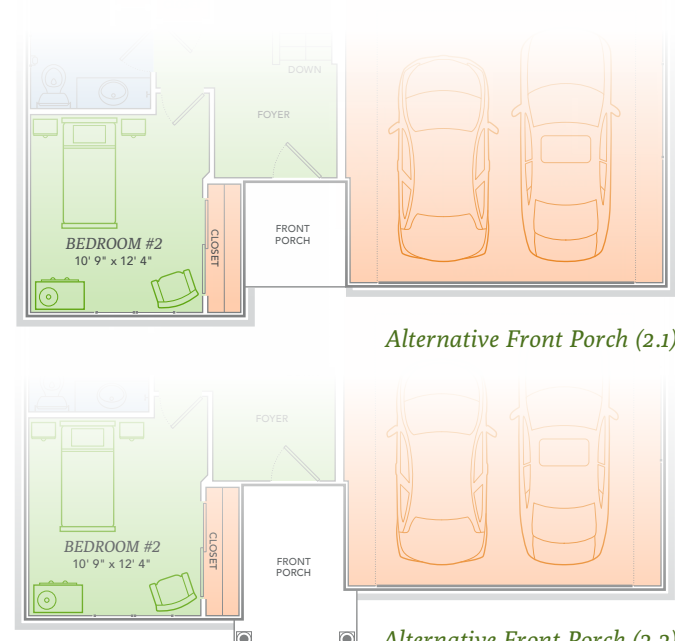


## ADLER II

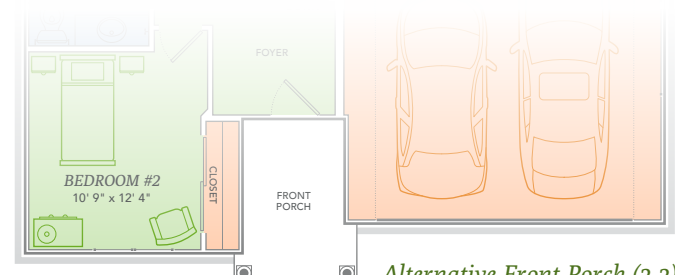
1,470 Square Feet



Alternative Front Porch (1.1)



Alternative Front Porch (2.1)



Alternative Front Porch (2.2)

THE ADLER HAS ALL THE AMENITIES IN ONE HUMBLE FLOORPLAN, because who said simplicity had to be boring? This remarkable ranch home features a welcoming foyer, an airy great room and kitchen, a spacious laundry room, and best of all, each bedroom has an adjacent bathroom. So host a dinner party or enjoy a cocktail on the deck with friends, and when the night is over you can rest easy with the Adler.

## Features

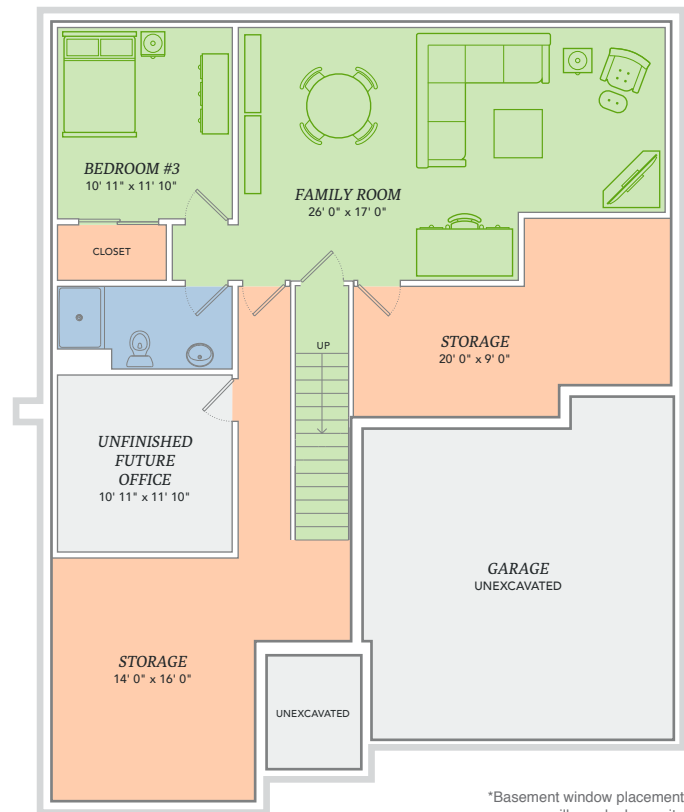
- Ranch style condo
- Nine foot ceilings throughout first floor
- Fireplace in great room
- Kitchen open to living and dining areas
- Full basement
- Convenient kitchen island with breakfast bar and pantry
- Custom Auburn Ridge® cabinetry
- Owner's suite features large walk-in closet and private bath
- First floor laundry/mudroom
- Finished lower level
- Finished deck
- Smart Home+ technology
- Energy expert certified
- Award-winning, high-performance home

## Options

- Custom built-ins
- Tray ceiling in owner's suite
- Personalized closet systems
- Additional green materials/products
- Personalize your home with thousands of options found within our Design Studio

## FINISHED BASEMENT

601 Square Feet



\*Basement window placement will vary by homesite



\*Features from a similar model

**CERTIFIED HIGH-PERFORMING HOMES**  
BUILDING ENERGY EFFICIENT, GREEN HOMES SINCE 2001





- Energy Expert Certified
- Insulated Entry Door
- Pella® Low-E Insulated Windows
- Insulated Garage Door
- Electronic Set-Back Thermostats
- Energy Efficient LED Lighting
- Kohler® Low Flow Fixtures
- Energy Star® Bath Fans
- Energy Efficient Air Conditioner, Furnace and Water Heater
- Radon Mitigation System
- 2x6 Framed Walls, 24 on Center
- Tyvek® House Wrap
- Advanced Air Sealing
- Spray Foam Insulation
- Weather Max® Adhesive Membrane



**\$296 IN SAVINGS EVERY MONTH!\***

**A LOOK INSIDE THE ADLER'S ENERGY EFFICIENCY.** Lower index = higher efficiency. What does that mean to you? A HERS Index is the industry standard by which a home's energy efficiency is measured. It is also the nationally-recognized system for inspecting and calculating a home's energy performance. A Veridian home receives a rating 56 HERS or better, averaging 51 HERS, compared a typical old used home, which rates at 130 HERS – that's greater than a 70% increase in total energy performance. This means that your dream home will not only look like a dream, but it will run like one too.

\*Estimated average monthly energy bill savings with the Adler. The costs were calculated using REM/Rate™ 12.97 and the HERS Score for the reference homes listed in the arrow chart and were published by RESNET, as compared to the typical used home. The typical used and new home scores were determined by the U.S. Department of Energy.

